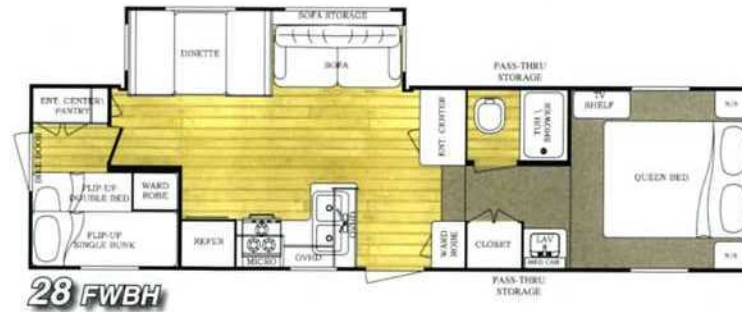


FIFTH WHEELS



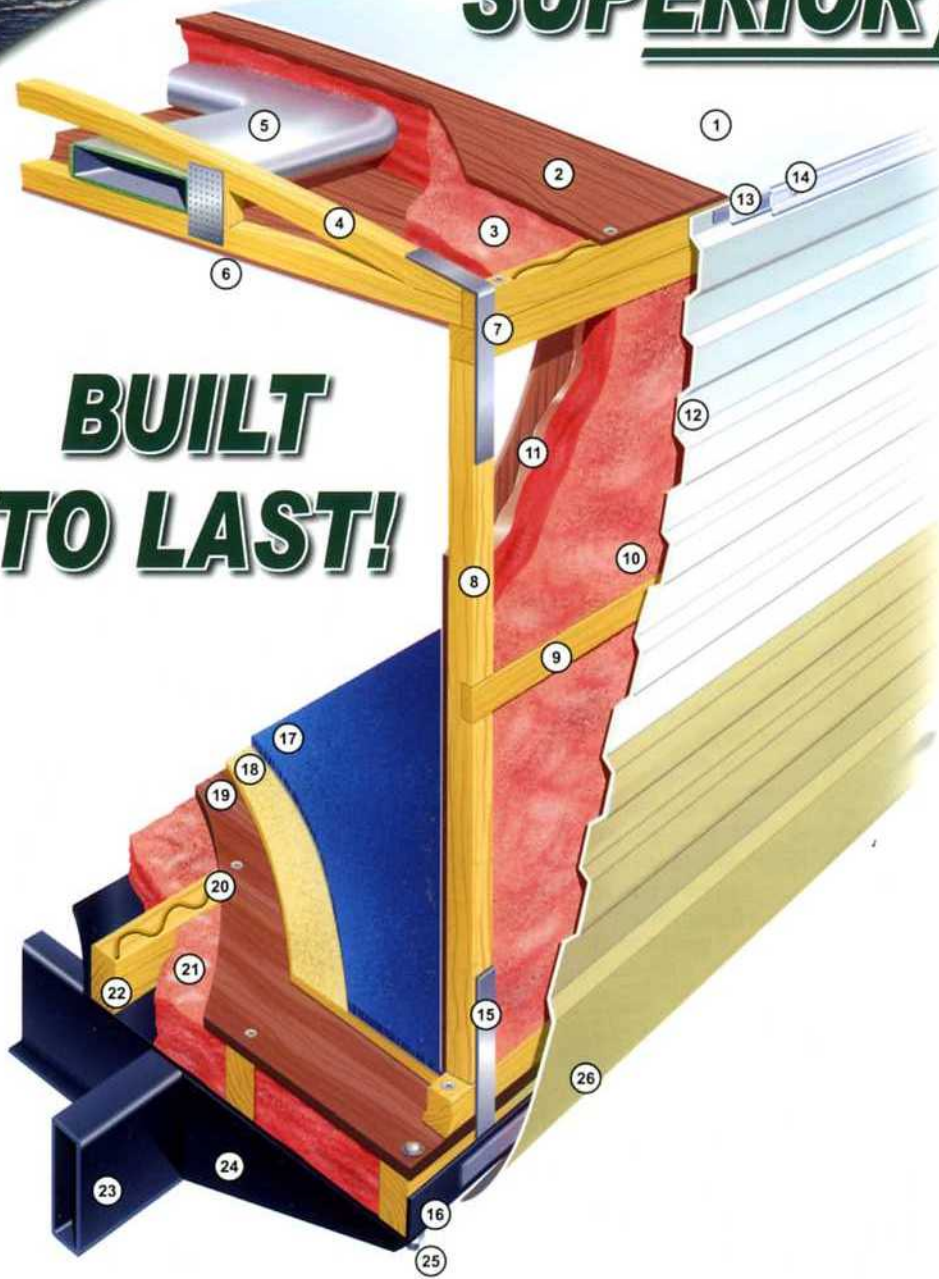
Front Fiberglass Cap
is Standard on all models.



FAMILY OWNED SINCE 1983

SUPERIOR CONSTRUCTION

**BUILT
TO LAST!**



1. One-Piece, Seamless Roof with 12 Year Warranty
2. Strong Wood Roof Decking, Glued and Screwed
3. Thick Blanket of Fiberglass Insulation
4. 4½" Residential Style Bowed Roof Truss System
5. Insulated Air Conditioning Duct System with Radius Corners for Improved Air Flow
6. Interior Ceiling Board
7. Galvanized Steel Straps - Used to Increase the Roof-to-Sidewall Transition Strength and Solidify our Uni-Body Construction
8. Sturdy 2 x 2 Wood Sidewall Construction, 16" On Centers (Walls are always set on the floor, not next to it, for maximum strength, and screwed into place)
9. Dadoed Belt Rail Construction Through the Middle of the Side and End Walls Provides Additional Uni-Body Strength
10. Thick Blanket of Fiberglass Insulation, Hand-Cut and Fit for Long Lasting Energy Efficiency
11. Glue Used to Bond Hand Cut Insulation to Interior Wall Board - To Eliminate Possible Slipping or Movement
12. Exterior Aluminum Siding with Baked Enamel Finish
13. Butyl Caulking for Superior Seal & Less Black Streaks
14. Drip Rail/Awning Rail, Screwed to Roof Framing - Helps Keep Unit Clean
15. Galvanized Steel Straps - Used to Increase the Sidewall-to-Floor Transition Strength and Solidify our Uni-Body Construction
16. Tough Poly Max Underbelly Wrapped Up Sides and Ends, Protects Against Moisture and Road Debris
17. Plush, Durable Residential-Style Carpeting (Supreme)
18. Thick Foam Carpet Padding (Supreme)
19. 5/8" Floor Decking Screwed and Glued
20. Floor Decking Glued and Screwed to Floor Joists
21. Thick Blanket of Fiberglass Insulation
22. Sturdy 2 x 3 Wood Floor Joist System, 13" or Less O.C.
23. 2 x 6 Tubular Steel Frame (up to 30') 8" I-Beam Frame (32' and up)
24. Full Width Steel Outriggers - Superior Strength & Support
25. Steel Bolts Secure Floor To Steel Outriggers
26. Exterior Metal is Screwed into Floor Framing From Side, Not Stapled from the Bottom, Preventing Leaks

SHOPPERS GUIDE TO VALUE

STANDARD FEATURES

	Gulf Stream	Other Brands		Gulf Stream	Other Brands		Gulf Stream	Other Brands
• Hard-wired Slide Rooms	✓		• TV Antenna w/Booster	✓		• Queen Bed w/Innerspring Mattress (most models)	✓	
• Contemporary White Doors and Windows	✓		• Gas Bottle Cover	✓		• Wall Mounted Light Switches Including Bathroom	✓	
• Large Double Door Refrigerator w/ Thermostat	✓		• Patio and Hitch Lights	✓		• Designer Bedspreads	✓	
• Gas Water Heater w/Auto Ignition	✓		• Large Residential Style Kitchen Sink	✓		• LP Leak Detector	✓	
• Pass-Thru Storage on Most Models	✓		• Double Easy-Open Entry Steps	✓		• Smoke Detector	✓	
• 13,500 BTU Air Conditioner	✓		• Deluxe AM/FM Stereo CD with DVD & 5 Spkrs (CD Only on Lite Models)	✓		• Space Saver, Under Floor Water Tank - 49 Gal.	✓	
• Decorator Mini-Blinds Standard!	✓		• Water Heater Bypass	✓		• Power Roof Vent in Bath	✓	
• Color Coordinated Awning	✓		• Extra TV Jack w/Tray in Bedroom	✓		• Deluxe Wallpaper Border in Livingroom	✓	
• 30" Wide Entry Door w/ Window	✓		• Systems Monitor Panel	✓		• Cable TV Hook-Up	✓	
• Hardwood Mortise & Tenon Cabinet Doors	✓		• In-Floor Seamless Ducted Heat (frees up more cabinet space)	✓		• Bed-Lift Pistons (where applicable)	✓	
• Carousel Microwave Oven	✓		• Power Range Hood w/Light and Fan	✓		• Rain Guard Gutter Rail w/ Down Spouts	✓	
• E-Z Store Sofa - Easiest Access Around!	✓					• Insulated Exterior Storage Compartments	✓	
• Large Storage Chest Behind Sofa Slides	✓							

Superior Construction

	Gulf Stream	Other Brands
• All Walls Mounted ON Floors (not next to them)	✓	
• Decked One-Piece Roof Featuring A 12-Year Warranty	✓	
• 2 x 4½" Residential Style Bowed Roof Truss System (strongest construction available) with ducted air conditioning option	✓	
• Sidewalls are Screwed to Ceiling and Floor, and Strapped with Strong Galvanized Steel Straps	✓	
• Dadoed Belt-Rail Wall Construction, Combined with Galvanized Steel Straps & Screws For Unmatched UNI-BODY Strength	✓	
• ¾" Floor Decking Glued & Screwed	✓	
• 30" Wide Entry Door	✓	
• Hand-Cut & Glued Fiberglass Insulation	✓	
• Clear Span Power Slide-Out Rooms w/Steel Header	✓	
• Solid Box & I-Beam Heavy Duty Steel Frames	✓	

Supreme Package

• Raised Hardwood Cathedral Overhead Doors
• 2-3 Fluorescent Lights
• Pleated Window Shades
• Pot and Pan Drawer Under Dinette
• Residential Style Interior Doors
• Upgrade Medicine Cabinet
• Plush Carpeting
• Deluxe Fabrics
• Upgrade Bedroom Décor
• Deluxe Bathtub Surround
• Outside Scare Light
• Deluxe Entry Door
• Deluxe Graphics
• 110 Volt Auto Ignition Water Heater

Popular Options

• 4 Door Slide Out Overhead Cabinet
• Shower Pan (in place of tub)
• Fiberglass "Slick Side" Exterior
• Roof Rack and Ladder
• Hide-A-Bed Sofa (select slide-outs)
• Spare Tire, Carrier and Cover
• Bright Trim Package: wheel trim & polished bumper cover, swing away assist handle
• Outside Shower
• Free Standing Dinette & Chairs
• Crank Down Stabilizer Jacks
• Electric Hitch Jacks (5th wheels only)
• Self Cleaning Shower Door
• Ceiling Paddle Fan (5th wheels)
• Fantastic Attic Fan

SPECIFICATIONS



FAMILY OWNED SINCE 1983

TRAVEL TRAILERS

MODEL NAME	20 BHL	23 BWL	24 RBL 24 BHL	24 RKL	259 BHL	26 SBW	26 RLS	265 TBS	275 FBD	275 FBS	29 FKS 29 PKS	296 RBW	29 SBW	295 BHS	298 DBS	30 TBR	32 TBR	351 PBS	36 DLS 36 FRS	38 BRS	40 TBS
Overall Length Apx.	23'-9"	25'-11"	25'-9"	27'-11"	28'-11"	28'-11"	29'-6"	29'-10"	29'-10"	29'-10"	33'-8"	32'-11"	32'-10"	32'-4"	32'-11"	34'-6"	35'-8"	35'-9"	35'-7"	36'-7"	36'-2"
Overall Ext. Height Apx. with AC	9'-11"	10'-1"	9'-11"	10'-9"	10'-9"	10'-9"	10'-9"	10'-11"	9'-11"	10'-1"	10'-9"	10'-9"	10'-9"	10'-9"	10'-9"	10'-9"	10'-9"	10'-9"	10'-9"	10'-9"	10'-9"
Net Carrying Capacity	2,046	3,127	3,328	2,257	1,891	4,581	4,470	1,352	2,676	2,196	4,382	4,278	4,018	4,266	4,212	3,739	3,300	3,845	2,827	3,241	2,297
Hitch Weight	480	830	560	840	700	900	550	810	690	750	1,040	990	730	720	850	780	850	900	1,120	1,190	1,200
Total Weight	3,904	4,703	4,232	5,683	5,809	6,009	6,240	6,458	5,014	5,554	6,818	6,872	6,872	6,614	6,798	7,201	7,850	7,215	8,453	8,109	9,063
Fresh Water	55 Gal.	55 Gal.	55 Gal.	55 Gal.	55 Gal.	55 Gal.	55 Gal.	55 Gal.	55 Gal.	55 Gal.	55 Gal.	55 Gal.	55 Gal.	55 Gal.	55 Gal.	55 Gal.	55 Gal.	N/A	N/A	N/A	N/A
Waste Water Tanks	78 Gal.	78 Gal.	78 Gal.	117 Gal.	78 Gal.	117 Gal.	78 Gal.	78 Gal.	78 Gal.	78 Gal.	78 Gal.	117 Gal.	117 Gal.	78 Gal.	78 Gal.	78 Gal.	78 Gal.	78 Gal.	117 Gal.	117 Gal.	148 Gal.
Dual LP Gas Bottles	20 Lb.	20 Lb.	20 Lb.	20 Lb.	20 Lb.	30 Lb.	30 Lb.	30 Lb.	30 Lb.	30 Lb.	30 Lb.	30 Lb.	30 Lb.	30 Lb.	30 Lb.	30 Lb.	30 Lb.	30 Lb.	30 Lb.	30 Lb.	30 Lb.
Furnace	25,000	25,000	25,000	25,000	25,000	30,000	25,000	25,000	30,000	25,000	30,000	30,000	30,000	30,000	30,000	30,000	30,000	30,000	30,000	30,000	30,000

With Hitch attached **— length is 39'11" ***— length is 39'10" ****— length is 40'6"

www.GULFSTREAMRV.COM

FIFTH WHEELS

MODEL NAME	24 FTBS	245 FBW	26 FRBW	28 FWBH
Overall Length Apx.	27'-5"	28'-3"	28'-10"	31'-4"
Overall Ext. Height Apx.	11'-3"	11'-3"	12'	12'
Net Carrying Capacity	2,183	See Web	4,014	4,483
Hitch Weight	1,600	See Web	1,270	1,800
Total Weight	6,417	See Web	7,416	7,477
Fresh Water	49 Gal.	49 Gal.	49 Gal.	49 Gal.
Waste Water Tank	78 Gal.	78 Gal.	78 Gal.	117 Gal.
Furnace	25,000	25,000	25,000	30,000

24 MONTH WARRANTY

ON STRUCTURAL COMPONENTS*

1 year total use warranty under normal use against defects in material and/or workmanship in construction and original components.

*For purposes of this warranty, Structural components shall be limited to the structure of the side walls, front and back walls, roof and floor. See the official written Gulf Stream Coach, Inc. Warranty for details.

All Weights Shown are in Dry Condition, without options or fluids. Please add for additional options and features. Consult the weight tag inside kitchen cabinet and your tow vehicle owners manual for more information.