

2006 KOUNTRY STAR DIESEL PUSHER

# 2006 KOUNTRY STAR

DIESEL PUSHER

*by Newmar*











Life is a feast.  
We're throwing the party.

What's our recipe for good living?

Build lasting friendships.

Share our good fortune with people we love.

Find something to savor in every moment.

Serve up adventure in our Kountry Star.



### Bathroom Amenities

Easy-cleaning, solid-surface countertops, ample cabinet space and a glass shower door are but a few of the Kountry Star bathroom's thoughtful conveniences.



### Dinette

The standard Kountry Star dinette, with its hidden-leaf table, two upholstered side chairs and two upholstered folding chairs, is a perfect setting for meals, conversations or board games.



### Pullout Pantry

Roomy, adjustable pullout shelves let you bring along all your favorite provisions and get at them easily.

## Newmar's legacy lives on in new ways.

All of us at Newmar take special pleasure in offering this extraordinary motorhome. That's because, once again, Kountry Star raises the standards for RVing yet manages to keep it affordable. Look at all the amenities and you'll know what an accomplishment that was. It took innovation —and an eye for the details to make RV living come alive. People trust Newmar for this. It's our legacy to each new generation of RV enthusiasts.

*Richard E Parks*

Richard E. Parks  
President, Newmar Corporation



### Kountry Star Living

Open, airy floorplans. Room-expanding slideouts. Plush furniture. And extraordinary options, like a freestanding roundtable dinette. Kountry Star defines "the good life" and lets you live it freely.



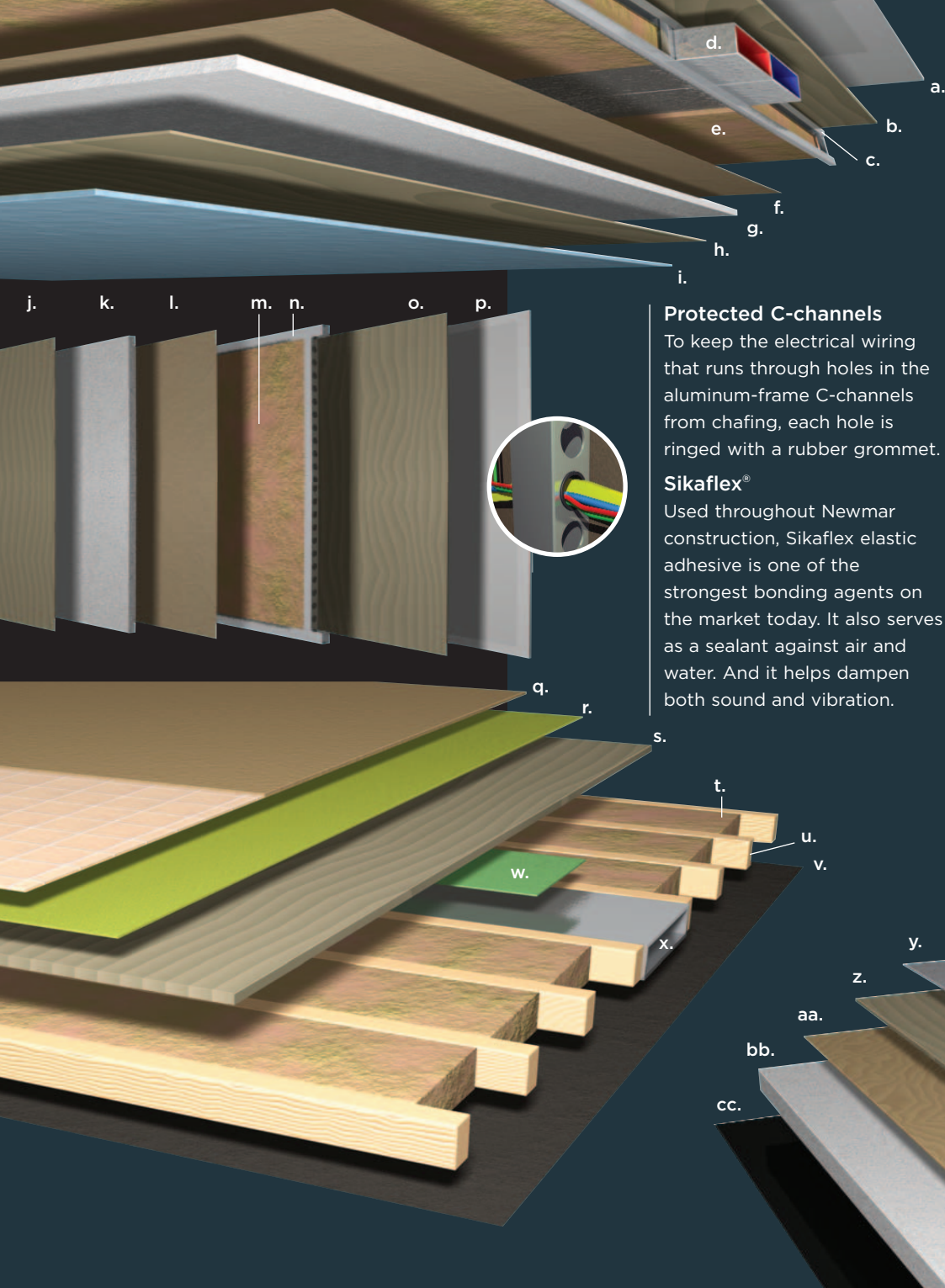


### Dreamland

Depending on the floorplan, Kountry Star bedrooms offer a king or queen bed with a quilted headboard and bedspread, a reverse sham and accent pillows. Rear wardrobe floorplans give you the option of extra shelving built into the recess of the end cap.







- Ceilings: R-value = 16**
- a. BriteTEK™ Roof
  - b. 9 mm Wood Decking
  - c. Aluminum Roof Truss
  - d. A/C Ducting
  - e. Fiberglass Batten Insulation
  - f. Kraft Paper Vapor Barrier
  - g. 5/8" Bead Foam
  - h. 3/16" Panel
  - i. Padded Vinyl Overlay
- Walls: R-value = 11**
- j. 3/16" Plywood Interior Wall
  - k. 5/8" Bead Foam
  - l. Kraft Paper Vapor Barrier
  - m. Fiberglass Batten Insulation
  - n. Aluminum Framing with 3/2" Header
  - o. 3/16" Plywood Exterior Wall
  - p. Composite One-piece Gelcoat Exterior Sidewall
- Flooring: R-value = 16**
- q. Carpet/Tile
  - r. Carpet Padding
  - s. 5/8" Floor Decking
  - t. Fiberglass Batten Insulation
  - u. 2" x 3" Wood Framing
  - v. Polyethylene Moisture Barrier
  - w. Foam Panels (Noise Reduction)
  - x. Aluminum Ducting
- Basement: R-value = 4**
- y. Cargo Liner
  - z. 3/8" Floor Decking
  - aa. 3/16" Luan Panel
  - bb. 1 1/2" Bead Foam
  - cc. Aluminum Sheeting (Prevents Distortion)

**Protected C-channels**

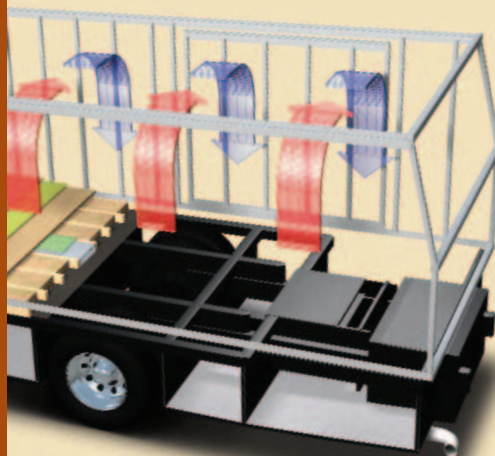
To keep the electrical wiring that runs through holes in the aluminum-frame C-channels from chafing, each hole is ringed with a rubber grommet.

**Sikaflex®**

Used throughout Newmar construction, Sikaflex elastic adhesive is one of the strongest bonding agents on the market today. It also serves as a sealant against air and water. And it helps dampen both sound and vibration.

**Newmar Express Limited Warranty**

For your protection and peace of mind, we at Newmar back your Kountry Star Diesel Pusher with one-year/unlimited-mileage warranty coverage: The Newmar Express Limited Warranty. Ask your dealer for an explanation and a copy of the warranty's complete terms.



**Newmar Total Comfort™ Central Air Conditioning**

Experience RV air conditioning just like that found in site-built homes. Newmar's Total Comfort Central Air Conditioning is actually two separate, fully ducted systems: one to distribute incoming cool air, the other to quickly and effectively remove warm air from every living area.

**16" On-center Framing**

Just like a fine site-built residential home, your Newmar home is framed 16 inches on center, which allows the best placement of outlets, switches and other components.





### Power Footrest

The Ultraleather Cirrus passenger seat has a button-activated footrest for added travel comfort—or for lounging, when the chair is swiveled to face the living area.



### Chassis Information Center

This dash-mounted LCD monitoring system lets you keep track of such useful data as fuel economy, trip miles and engine temperature, among other things. It also displays diagnostics.



### End-cap Designs

Kountry Star's clean, crisp exterior styling gets a boost from its striking front and rear end caps. They harmonize the exterior elements and give the coach a sleeker look.



### Exterior Entertainment

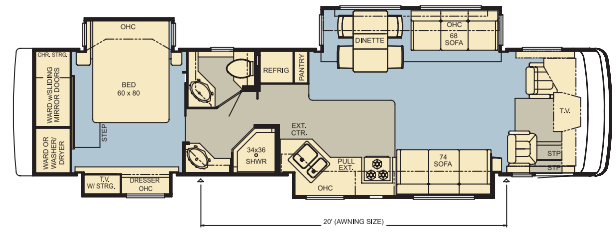
A popular option, this enclosed system includes an LCD flatscreen color TV mounted on a swing-out arm, a Sony® AM/FM stereo with a CD player and two speakers.



# We have a floor for every plan.

It's your life. Kountry Star lets you live it as you please.

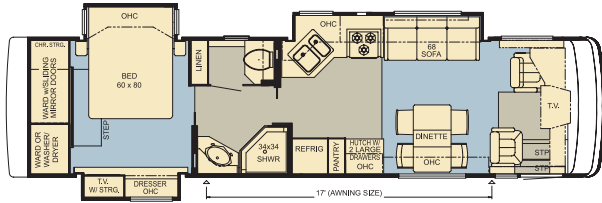
Choose the floorplan that best suits your needs, your hopes, your dreams. You've got plenty of options with Newmar.



**KSDP 3910**  
Options: K125\_2, K201, K276, K541\_2, K621

Length: 39' 02"  
Width: 101.5"

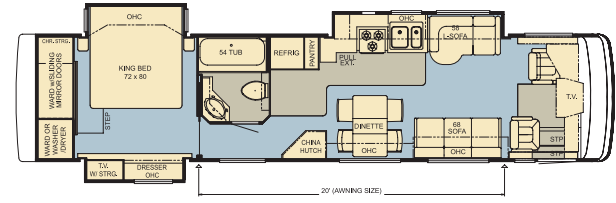
Unique Attributes:  
Hide-a-Leaf Dinette  
Two Bathroom Sinks  
Two Sofas



**KSDP 3509**  
Options: K125\_3, K273\_2, K541

Length: 35' 07"  
Width: 101.5"

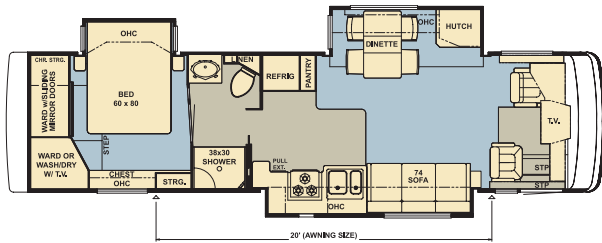
Unique Attributes:  
68" Sofa  
Extra Bedroom Storage  
Washer and Dryer Prep



**KSDP 3911**  
Options: J583, K031, K125\_3, K273\_2, K541

Length: 39' 02"  
Width: 101.5"

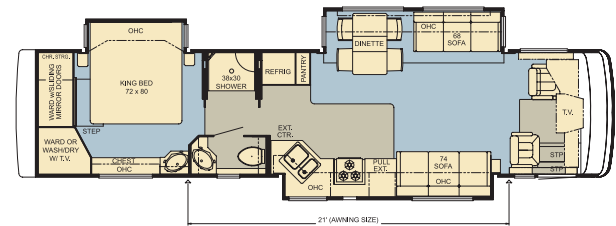
Unique Attributes:  
China Hutch  
King Bed  
Two Sofas



**KSDP 3510**  
Options: K125\_2, K201, K273\_3, K541\_2

Length: 35' 07"  
Width: 101.5"

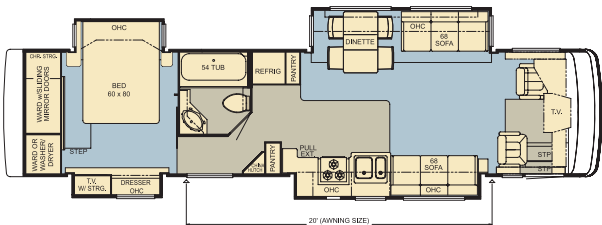
Unique Attributes:  
Extra Bedroom Storage  
Hutch  
Washer and Dryer Prep with TV



**KSDP 3912**  
Options: K031, K125\_2, K201, K273\_3, K541\_2

Length: 39' 02"  
Width: 101.5"

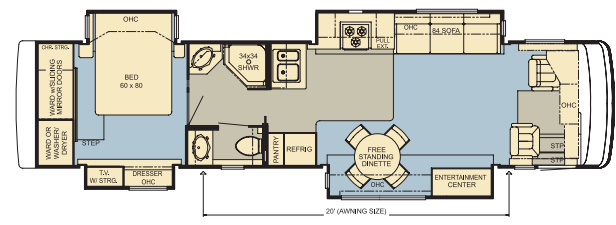
Unique Attributes:  
Extra Sink  
King Bed  
Two Sofas



**KSDP 3909**  
Options: K125\_2, K200, K273\_3, K541\_2

Length: 39' 02"  
Width: 101.5"

Unique Attributes:  
Extra Pantry Storage  
Two Sofas  
Washer and Dryer Prep in Bedroom



**KSDP 3913**  
Options: K125\_4, K273

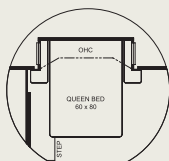
Length: 39' 02"  
Width: 101.5"

Unique Attributes:  
Entertainment Center  
Round Dinette Table  
Two Bathroom Sinks

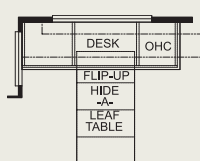
■ Carpet    ■ Simulated Marble Flooring



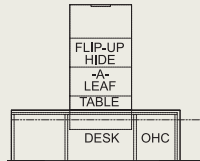
**J583** 56" Entertainment Center 3911



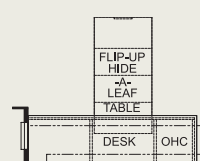
**K031** Queen-sized Bed 3911, 3912



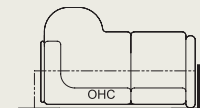
**K125\_2** Combination Desk 3510, 3909, 3910, 3912



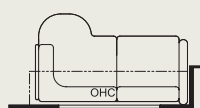
**K125\_3** Combination Desk 3509, 3911



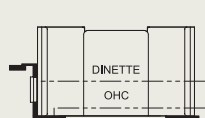
**K125\_4** Combination Desk Dinette 3913



**K200** 66" L-lounge Sofa 3909



**K201** 72" L-lounge Sofa 3510, 3910, 3912



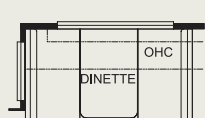
**K273** Booth Dinette 3913



**K273\_2** Booth Dinette 3509, 3911



**K273\_3** Booth Dinette 3510, 3909, 3912



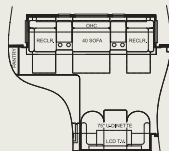
**K276** Booth Dinette 3910



**K541** Round Dinette Table 3509, 3911



**K541\_2** Round Dinette Table 3510, 3909, 3910, 3912



**K621** Theatre Seating 3910





Charcoal



Currant



Desert Green



Wicker

### Full-Paint Masterpiece Finish™

Newmar's Full-Paint Masterpiece Finish creates an exterior of stunning beauty and incredible endurance—a true work of art. As industry leaders in applying full body paint to motorhome coaches, we at Newmar are pleased to offer the Full-Paint Masterpiece Finish as a Kountry Star Diesel Pusher standard.

### Diamond Shield

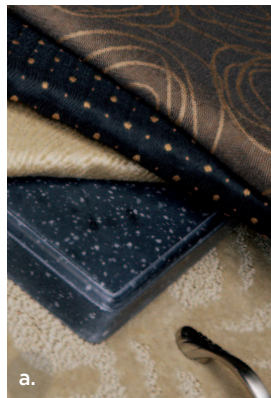
Diamond Shield Front Paint Protection Film is standard on all Kountry Star Diesel Pushers featuring the Full-Paint Masterpiece Finish. This film protects against stone chips, scratches and bug acids and keeps the Full-Paint Masterpiece Finish looking new.

#### Interior Colors

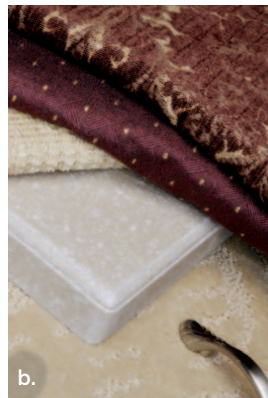
- a. Charcoal
- b. Currant
- c. Desert Green
- d. Wicker

#### Finishes and Woods

- e. Oak Cabinetry, Standard
- f. Maple Cream Cabinetry
- g. Ericksburg Cherry Cabinetry
- h. Oak Hardwood Cabinetry
- i. Coastal Cherry Hardwood Cabinetry
- j. Velvet Cherry Hardwood Cabinetry



a.



b.



c.



d.



e.



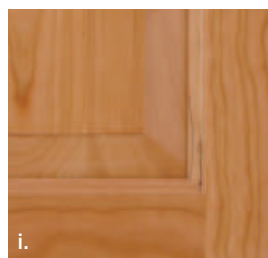
f.



g.



h.



i.



j.

*Some features shown in our literature are optional. Colors and finishes are photographic representations. The actual materials may look different. Prices, specifications and floorplans are subject to change at Newmar's discretion, without prior notice or obligation. Please see your dealer for actual samples and specifications.*



# Features

## STANDARD FEATURES

### CHASSIS FEATURES

- Spartan® Mountain Master Chassis with IFS
- Cummins® ISC 330 hp with Side Radiator (35' Floorplans)
- Cummins ISL 350 hp with Side Radiator (39' Floorplans)
- Exhaust Brake
- Hydraulic Leveling Jacks with Touch Control
- Cruise Control
- Tilt-and-Telescope Steering Wheel
- Stainless Steel Wheel Simulators
- Recessed Fuel Fills with Crossover to Fill from Either Side
- Back-up Alarm
- Anti-lock Braking System
- Electronic Chassis Information Center in Dash

### AIR CONDITIONING & HEATING

- Two 13.5M Penguin™ Heat Pump Air Conditioners
- LP Furnace with In-floor Ducted Heat
- Dash Heater and High-output Air Conditioner
- LP Leak Detector

### APPLIANCES & ACCESSORIES

- 30" Convection Microwave Oven with Three-burner Cooktop and Electronic Ignition
- Solid-surface Range Cover
- Dometic® 10 Cu. Ft. Refrigerator
- Hardwood Raised-panel Refrigerator Front
- 10 Gal. Gas/Electric Water Heater with Direct-spark Ignition
- One-piece Washer/Dryer Prep
- Sony® Flatscreen Color TV in Living Area
- Panasonic® Flatscreen Color TV in Bedroom
- AM/FM Dash Radio with Cassette and CD Player
- Sony Surround Sound System with AM/FM Radio, VCR, DVD Player and Subwoofer
- Rearview Color Monitor System
- TV Antenna with Power Booster and Two Interior Jacks
- Satellite Prep — Phone, TV Jack and Receptacle
- Exterior TV Jack on Door Side
- Telephone Connection with Phone Jacks in Living and Dash Area
- Two Bedroom Radio Speakers with On/Off Switch
- Roof-mounted Air Horns
- 10 Bc Fire Extinguisher, Carbon Monoxide and Smoke Detectors

### CABINETS & FURNITURE

- Oak Hardwood Raised-panel Arched Cabinet Doors
- Hidden-leaf Dinette Table with Four Chairs (Two Fixed, Two Folding)\*
- Round Hardwood Dinette Table with Four Fixed Chairs\*
- Solid-surface Countertop in Kitchen with Undermounted Acrylic Sink and Flush Sink Covers
- One-piece Molded Countertop in Bathroom with Integrated Bowl
- Drawers with Metal Guides
- Flexsteel® Furniture
- Ultraleather Cirrus Driver/Passenger Seats with Six-way Power, Power Lumbar, Ergo-Flex Arms and Passenger Footrest
- Lifts on Bed Top to Access Storage Area
- Tufted Mattress with Quilted Bedspread
- King Bed\*

### ELECTRICAL FEATURES

- 8.0 kW PowerTech Diesel Quiet Series Generator
- 50 Amp Electrical Service with Flexible Cord
- Two 6 Volt House Batteries on Pullout Tray
- Battery Disconnect Switch
- 110 Volt Exterior Receptacle on Door Side
- 5 Watt Solar Panel
- 55 Amp Converter
- 600 Watt Inverter for Living Area or Bedroom TV
- Emergency Start Switch
- Exterior Security Lights, One on Each Side
- Midship Side Turn Signals
- Switched Receptacle for Engine Block Heater
- Fluorescent Lights Throughout
- Lighted Wardrobe
- Slideout Information Voice Module
- Manually Operated Hold-to-Run Slideout Switch
- ICC Light Switch
- Two 12 Volt Auxiliary Receptacles on Dashboard
- Interior Courtesy Lights

### EXTERIOR FEATURES

- Full-Paint Masterpiece Finish™ with Diamond Shield Front Protective Film
- Convex Exterior Mirrors with Remote Control, Defrost and Turn Signals
- Automatic Entrance Door with Double Step
- Front Entry Door with Power Flush Stepwell Cover
- Side-hinged Baggage Doors (Between Axles on Door Side, Except Door for Exterior Ent. Ctr.)
- Lighted Exterior Storage Compartments Controlled by Interior Master Switch
- 10,000 lb. Towing Hitch
- Lighted Acrylic Assist Handle at Entrance Door
- Rear Protective Tow Guard with Stainless Steel Newmar Name Cutout
- Rear Ladder
- Undercoating

### INTERIOR FEATURES

- Padded Vinyl Ceiling
- Day/Night Pleated Window Shades and Lambrequins
- Mini-blinds in Kitchen and Bath Areas
- Hardwood/Fabric Fascia on Living Area and Bedroom Slideouts
- Simulated Marble Floor in Kitchen, Bathroom and Entrance Door Area
- Deluxe Carpeting with High-density Padding in Living Room and Bedroom
- Flat-panel Interior Passage Doors
- Interior Assist Handle at Main Entrance Door
- Sun Shades on Driver- and Passenger-side Windows

### PLUMBING/BATH FEATURES

- Sewage Holding-tank Rinse
- Water Heater Bypass System
- SeaLand™ 500+ China Stool with Spray Attachment
- Towel Bars, Tissue Holder and Robe Hook
- Fiberglass Tub/Shower with Glass Shower Door
- Monitor Panel
- Water Pump Switches Located in Bathroom, Above Entrance Door, and on Exterior, Near Gate Valves
- Exterior Shower

### WINDOWS, AWNINGS & VENTS

- Double-pane Tinted Safety-glass Windows
- Fan-Tastic® Vent with Rain Sensor in Kitchen and Bathroom Areas
- A&E® 9000 Side Awning
- A&E Slideout Awning Covers

## OPTIONAL FEATURES

### CHASSIS FEATURES

- Coated Aluminum Wheels

### APPLIANCES & ACCESSORIES

- Three-burner Range with Oven
- Dometic 12 Cu. Ft. Side-by-Side Refrigerator
- Norcold® 12 Cu. Ft. Four-door Refrigerator with Icemaker and Water Dispenser
- Icemaker Added to Refrigerator\*
- Norcold Freezer on Pullout Tray
- One-piece Washer/Dryer
- SIRIUS® Satellite Radio Capability (Does Not Include Monthly Subscription)
- 10-disc CD Player
- External Entertainment Center with 26" LCD TV and AM/FM Radio and CD Player
- KVH® Automatic Satellite without Receiver
- KVH In-motion Satellite without Receiver
- KVH L-3 In-motion Satellite without Receiver
- Entertainment Center with Relocated Living Area TV and Surround Sound System
- CB Radio with Antenna
- CB Antenna

### CABINETS & FURNITURE

- Maple Cream Cabinets
- Ericsburg Cherry Cabinets
- Oak Hardwood Cabinets
- Coastal Cherry Hardwood Cabinets
- Velvet Cherry Hardwood Cabinets
- Ultraleather Cirrus L-lounge\*
- Ultraleather Cirrus Sofa\*
- Hide-a-Bed Sofa with Air Mattress\*
- Ultraleather Cirrus Hide-a-Bed Sofa with Air Mattress\*
- Ultraleather Cirrus Theater Group Seating with U-dinette and 32" LCD TV\*
- Booth Dinette with Forward-facing Seatbelts
- Combination Desk/Dinette Table
- Round Hardwood Dinette Table with Four Fixed Chairs
- Storage Shelves Recessed into Rear Cap of Rear Wardrobe Floorplans
- Luxurious Pillowtop Mattress

### ELECTRICAL FEATURES

- Solar Prep
- 7.5 kW Onan® Diesel Quiet Series Generator
- 2000 Watt Inverter and Two Extra Batteries
- Recessed Docking Lights
- Pre-wire for Freezer

### EXTERIOR FEATURES

- Large Chrome Exterior Mirrors
- Large Storage Tray

### INTERIOR FEATURES

- Simulated Ceramic Tile Floor in Kitchen, Bathroom and Entrance-door Area
- Simulated Plank Floor in Kitchen, Bathroom and Entrance Door Area
- Power-activated Sun Visors



### PLUMBING & BATH FEATURES

- Assist Handle in Bathtub/Shower
- Fold-down Shower Seat
- 110 Volt Heat Pads for Holding Tanks
- Water Filter for Entire Unit

### CONSTRUCTION FEATURES

- One-piece Molded Fiberglass Roof with 9 mm Decking
- Power Lock Arms on All Slideout Rooms

### WINDOWS, AWNINGS & VENTS

- A&E® 9000 Bedroom and Slideout Window Awning
- A&E Oasis Manual Front Entrance Door Awning
- A&E Oasis Power Front Entrance Door Awning
- A&E Weather Pro Side Awning

\* Check with Dealership on floorplan availability.

## FLOORPLAN SPECIFICATIONS

FLOORPLAN	APP. OVERALL LENGTH <sup>1</sup>	APP. OVERALL WIDTH	APP. OVERALL HEIGHT	INTERIOR WIDTH	INTERIOR HEIGHT	GREY	SEWAGE	WATER	LP	FURNACE	WATER HEATER
KSDP 3509	35' 7"	101.5"	12' 1"	95.5"	80"	65 gal.	45 gal.	105 gal.	32 gal.	35,000 Btu	10 gal.
KSDP 3510	35' 7"	101.5"	12' 1"	95.5"	80"	65 gal.	45 gal.	105 gal.	32 gal.	35,000 Btu	10 gal.
KSDP 3909	39' 2"	101.5"	12' 1"	95.5"	80"	65 gal.	45 gal.	105 gal.	32 gal.	42,000 Btu	10 gal.
KSDP 3910	39' 2"	101.5"	12' 1"	95.5"	80"	65 gal.	45 gal.	105 gal.	32 gal.	42,000 Btu	10 gal.
KSDP 3911	39' 2"	101.5"	12' 1"	95.5"	80"	65 gal.	45 gal.	105 gal.	32 gal.	42,000 Btu	10 gal.
KSDP 3912	39' 2"	101.5"	12' 1"	95.5"	80"	65 gal.	45 gal.	105 gal.	32 gal.	42,000 Btu	10 gal.
KSDP 3913	39' 2"	101.5"	12' 1"	95.5"	80"	65 gal.	45 gal.	105 gal.	32 gal.	42,000 Btu	10 gal.

## SPARTAN® CHASSIS INFORMATION

FLOORPLAN	ENGINE HP	AXLE RATIO	FUEL CAP.	WHEELBASE	FRONT GAWR <sup>2</sup>	REAR GAWR <sup>2</sup>	GVWR <sup>2</sup>	GCWR <sup>2</sup>	APP. UVW	APP. NCC
KSDP 3509	330	4.88	100 gal.	216"	12,000 lb.	20,000 lb.	32,000 lb.	42,000 lb.	24,204 lb.	7,796 lb.
KSDP 3510	330	4.88	100 gal.	216"	12,000 lb.	20,000 lb.	32,000 lb.	42,000 lb.	24,604 lb.	7,396 lb.
KSDP 3909	350	4.88	100 gal.	258"	12,000 lb.	20,000 lb.	32,000 lb.	42,000 lb.	25,957 lb.	6,043 lb.
KSDP 3910	350	4.88	100 gal.	258"	12,000 lb.	20,000 lb.	32,000 lb.	42,000 lb.	26,027 lb.	5,973 lb.
KSDP 3911	350	4.88	100 gal.	258"	12,000 lb.	20,000 lb.	32,000 lb.	42,000 lb.	25,227 lb.	6,773 lb.
KSDP 3912	350	4.88	100 gal.	258"	12,000 lb.	20,000 lb.	32,000 lb.	42,000 lb.	25,627 lb.	6,373 lb.
KSDP 3913	350	4.88	100 gal.	258"	12,000 lb.	20,000 lb.	32,000 lb.	42,000 lb.	25,827 lb.	6,173 lb.

### MOUNTAIN MASTER CHASSIS

The Mountain Master chassis is America's most popular, premium, high horsepower diesel pusher. This premium world-class chassis is the flagship of Spartan Chassis, Inc. The Spartan Mountain Master and Mountain Master GT doesn't just lead the way, it paves the way! Experience the power, the superior ride and handling, plus the excellent driving performance with the Spartan Mountain Master chassis. The Mountain Master chassis provides excellent resale value and carries a 36 month, 50,000 mile, no deductible warranty, which includes road side assistance for the entire warranty period. So sit back and enjoy the ride!



Lengths, heights, widths and dry weights are approximate. Weight will vary based on optional equipment added to the above base weight.

GAWR: Gross Axle Weight Rating is the maximum permissible weight for an axle.

GVWR: Gross Vehicle Weight Rating is the maximum permissible weight of a fully loaded motorhome.

GCWR: Gross Combination Weight Rating is the value specified by the manufacturer of the vehicle as the maximum allowable loaded weight of this motorhome and any towed trailer or towed vehicle.

UVW: Unloaded Vehicle Weight is the weight of this motorhome as built at the factory with full fuel, engine oil and coolants. The UVW does not include cargo, fresh water, LP gas or dealer-installed accessories.

NCC: Net Carrying Capacity is the maximum weight of all occupants, including the driver, personal belongings, food, fresh water, waste water, LP gas, tools, tongue weight of towed vehicle, dealer-installed accessories, etc., that can be carried by the motorhome.

<sup>1</sup> Lengths do not include the rear ladder.

<sup>2</sup> Specifications are supplied by chassis manufacturer.

Our commitment is to provide you a recreational vehicle of the highest quality. These are some of the top manufacturers who help us fulfill this commitment by supplying us with superior components.



[www.spartanchassis.com](http://www.spartanchassis.com)

**SONY.**

[www.sony.com](http://www.sony.com)

**DIAMOND SHIELD**

[www.diamond-shield.com](http://www.diamond-shield.com)





## NEWMAR CONSTRUCTION

*Built to last*



## NEWMAR SERVICE

*Only one call*



NEWMAR QUALITY: A WAY OF LIFE

### The RVDA Quality Circle Award



For the fourth year in a row, Newmar has won the RVDA's Quality Circle Award, a reflection of feedback obtained from the association's annual dealer satisfaction survey. This is quite an honor — a measure of the trust our dealers and customers place in us. We will continue working to retain that trust.

### The Newmar Factory Tour

We would love to have you visit our state-of-the-art production facility in Nappanee, Indiana. That's why we offer factory tours Monday through Friday at 10 a.m. and 1 p.m., Indiana time. Pre-registration is not required but helpful, and certain safety restrictions do apply. For more information, or to pre-register, please call 800-860-0086.

**Newmar Corporation**  
355 N Delaware St  
PO Box 30  
Nappanee IN 46550-0030  
574-773-7791 Fax 574-773-2895  
[www.newmarcorp.com](http://www.newmarcorp.com)

Your Official Newmar Dealer: