

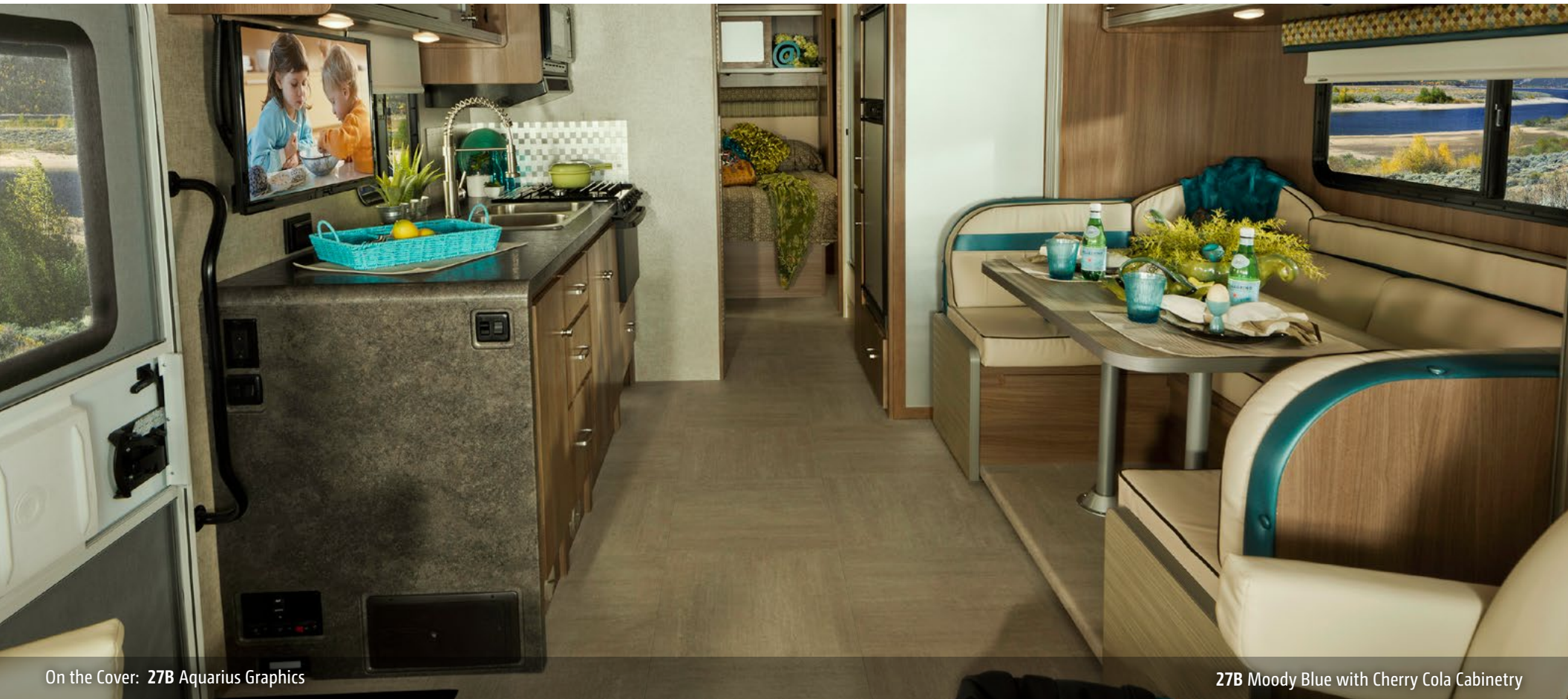
Tribute™



Why Tribute?

- Retro classic Winnebago exterior body styling
- Bold retro interior styling
- Powered StudioLoft™ beds
- LED lighting
- Innovative sliding dash Rearview Monitor/Rand McNally RV GPS
- MCD blackout roller shades
- Powered patio awning

WINNEBAGO ²™



On the Cover: 27B Aquarius Graphics

27B Moody Blue with Cherry Cola Cabinetry

A Legend Re-Imagined

Winnebago® ignited the motorhome craze of the late '60s, with its famous “eyebrow” coach design leading the way. The all-new Tribute™ took Winnebago’s trailblazing heritage with a fresh take on this iconic design. It is a look that conjures up the youthful enthusiasm you had when you first experienced the motorhome lifestyle, and it is an opportunity to share

that lifestyle with your own family. While the look brings you back, the amenities will keep you moving forward in comfort for years to come. With two versatile floorplans, exciting color schemes, and a price to fit the budget of a young, traveling family, the Tribute is a testament to both our rich history and your bright future in the motorhome lifestyle.



Recognized Quality The Recreation Vehicle Dealer Association annually rates RV manufacturers and awards the Quality Circle Award to manufacturers that provide exceptional products, service, and support. Winnebago is proud to be the only manufacturer that has received this award every year since its inception.

Best in Class

See how Winnebago takes motorhome design and function to the next level, and why we've earned the right to be called the Most Recognized Name in Motorhomes.®



Click on this icon throughout the brochure to link to more information on the web.



Easy-Slide Cabinet Doors make it easier to access your games and supplies with frosted panels that slide open rather than flip up.



The **U-Shaped Dinette** in the 27B quickly converts from a dining area to an additional sleeping space.



Turn your cab into a second bedroom with the convenient **StudioLoft™ Bed** that drops down from the cab ceiling for another sleeping space.



The **Passenger Workstation** effortlessly pulls out, allowing you to plan the next leg of your trip.



A **Rearview Monitor System** with Rand McNally GPS slides side-to-side for easy access for both the driver and the passenger.



Full-Extension Drawer Slides make it easy to open drawers wide and maximize their storage space.

TRIBUTE Lounge

WINNEBAGO

Like the classic coaches that took the country by storm in the '60s and '70s, the Tribute is a family-friendly coach that begs to be used again and again. Three distinct floorplans offer a range of furniture options, including the innovative Flex sofa/bed in the 26A. It flips up tight against the wall to provide additional floor space and cargo space. It even has a powered table for an additional work area or serving space. Maintenance is kept to a minimum with vinyl floor covering and vinyl-clad ceiling. Control your lighting and privacy with the MCD blackout roller shades.



27B Moody Blue with Cherry Cola Cabinetry



27B Removable Pedestal Table



27B U-Shaped Dinette



The Tribute's classic styling shines brightest in the galley, where a decorative backsplash and waterfall countertop work beautifully with the rich wood and frosted panel inserts of the easy-slide overhead cabinets. A pull-out sprayer over a deep stainless steel sink makes clean up easy. Everything you need to prepare a full meal is here, which can be served up in the U-shaped dinette (27B) or pedestal table and dinette (26A, 31C).



TRIBUTE Bed/Bath

WINNEBAGO

Traveling in retro style gives you the modern conveniences and comforts of present technology such as the walk-around queen bed in the 27B. In addition to multi-functional furniture, each model offers the powered StudioLoft™ bed which descends from the ceiling so it's there when you need it, hidden when you don't.



27B Bedroom



27B Shower



27B StudioLoft Bed



27B Bathroom



Dash

Remember paper maps? The Rand McNally RV GPS Navigation System renders them obsolete. It shares a screen with the Rearview Monitor that is mounted on a console that slides back and forth between the driver and passenger so you can navigate together. The dash radio sets the tone for entertainment with Bluetooth™ connectivity and an auxiliary audio input for connecting your digital devices. Take it all in from the soft and stylish comfort of fully-adjustable Primera cab seats.



Passenger Workstation



Cab Seats

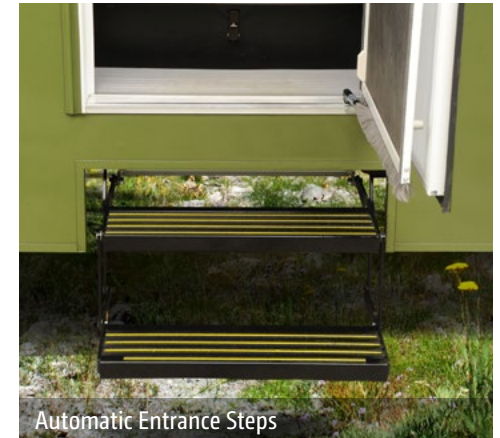


Powered Patio Awning

Five available exterior color palettes will turn heads, but why let everyone else have all the fun? Open up the big powered patio awning, set up your lawn chair, and sit back and admire the one-of-a-kind coach you proudly call home.



Exterior Trunk Storage



Automatic Entrance Steps



Powered Mirrors with Defrost



Stainless Steel Wheel Liners



Fiberglass Roof

The one-piece fiberglass roof is backed by a 10-year limited parts-and-labor roof skin warranty.

Rubber Can't Cut It

Rubber roofs used by competitors can streak and degrade over time.

Thermo-Panel® Sidewalls

By layering fiberglass and high-density block foam insulation with welded aluminum support structures, we create some of the industry's strongest, most durable and lightweight sidewalls.

E-Coating

An electrodeposition coating helps protect critical steel components.

Embedded Steel Metal substructures embedded into the sidewall provide solid attachment points to keep cabinets and appliances mounted securely in place.

Laser-Cut Tubing

Precision laser cutters create precise joints in structural steel that are stronger and require less welding.



Interlocking Joints

Specially engineered interlocking joints connect the floor, sidewalls and roof where competitors often rely on simple screws to bear the weight.



Solid Framework Aluminum extruded in our own facility to our exacting standards creates an extremely strong and solid structural framework.

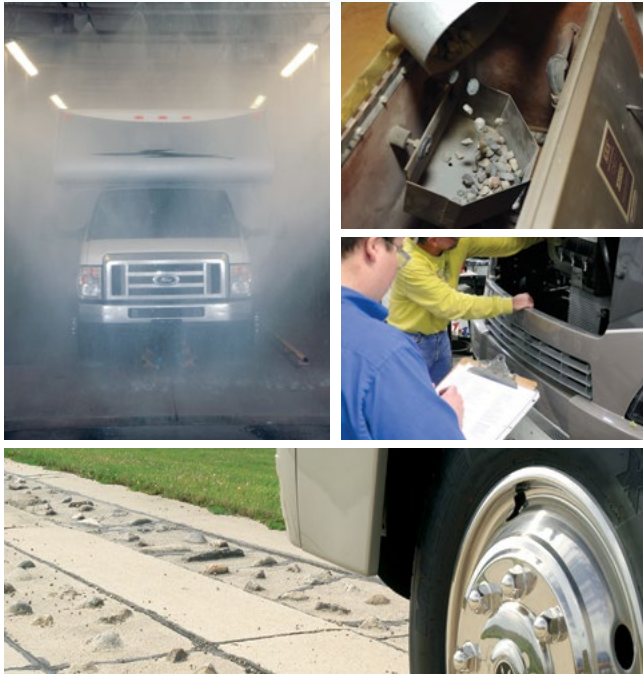
**SUPER
STRUCTURE**

BUILT TO LAST

Every coach—from our smallest Class C to our largest diesel-pusher model—is built to Winnebago's® legendary SuperStructure® construction standards. It's a process developed and refined over more than 50 years of building some of the strongest, most durable coaches in the industry.

TESTING

Before rolling out of our factories, every coach undergoes an extensive 113-point inspection. Each coach also passes a high-pressure water test that simulates rain at a rate of 50-inches per hour to check for leaks. During the design process, our computer simulations, physical testing center, and rigorous test track ensure each model is built to last.



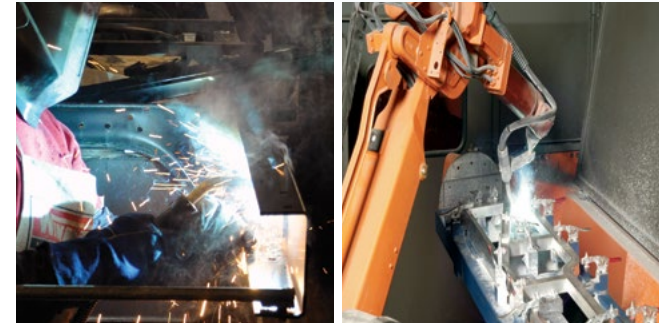
DETAILS

At Winnebago, we treat the features you can't see with the same care as the ones you can. Look in the access panels of some of our competitors' coaches and you'll see loose insulation and wires haphazardly strewn about. Winnebago maintains a clean fit and finish throughout so your coach will last for the long haul.



BUILT IN-HOUSE

We extrude our own aluminum. We rotocast our own plastic components. In fact, we manufacture most of our own parts so they are designed to fit the space, rather than fitting the space to an awkward off-the-shelf component size.



**SUPER
STRUCTURE**
BUILT TO LAST



Visit BetterBuiltRVs.com to gain real insight into what goes into a Winnebago motorhome.

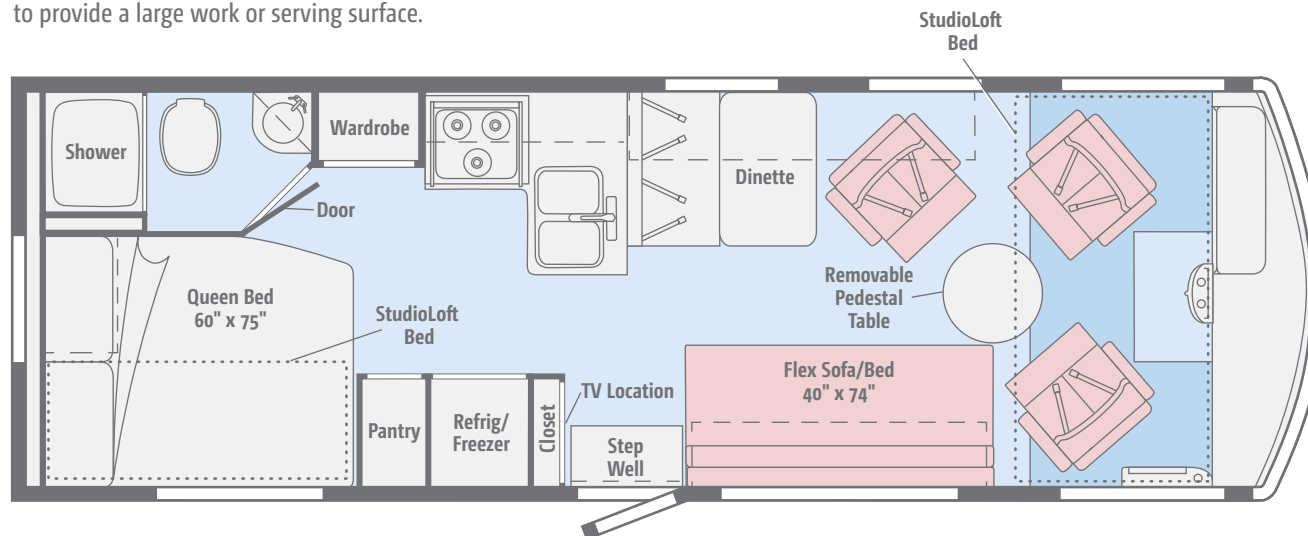
TAKE A TOUR

We're proud of our processes, state-of-the-art facilities, and the people who make Winnebago number one. We invite you to visit our complex in Forest City, Iowa, for a first-hand look at the dedication and technology behind every motorhome we build.



NEW 26A

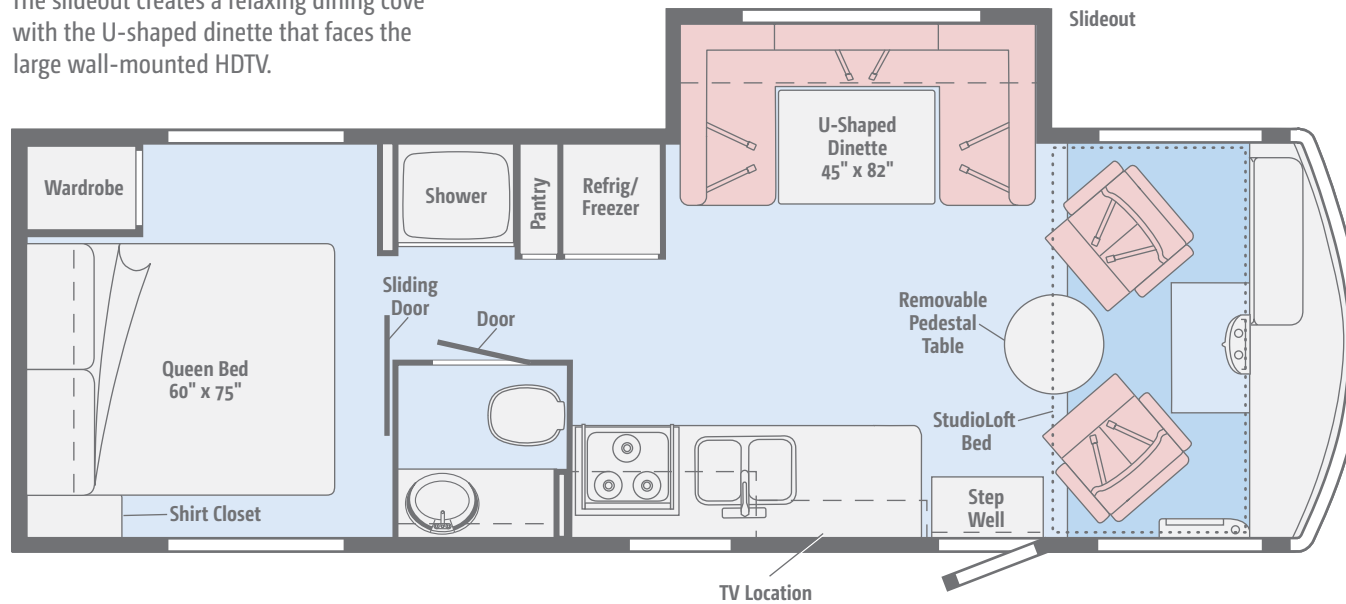
The flex sofa/bed can flip up against the wall for additional floor space and also features a powered table that flips up to provide a large work or serving surface.



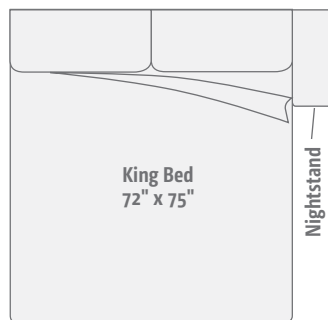
Dimensions shown are for sleeping space only and may vary due to styling differences. Dashed lines denote overhead storage areas. Floorplans and specifications are also available online at Goltasca.com.

NEW 27B

The slideout creates a relaxing dining cove with the U-shaped dinette that faces the large wall-mounted HDTV.

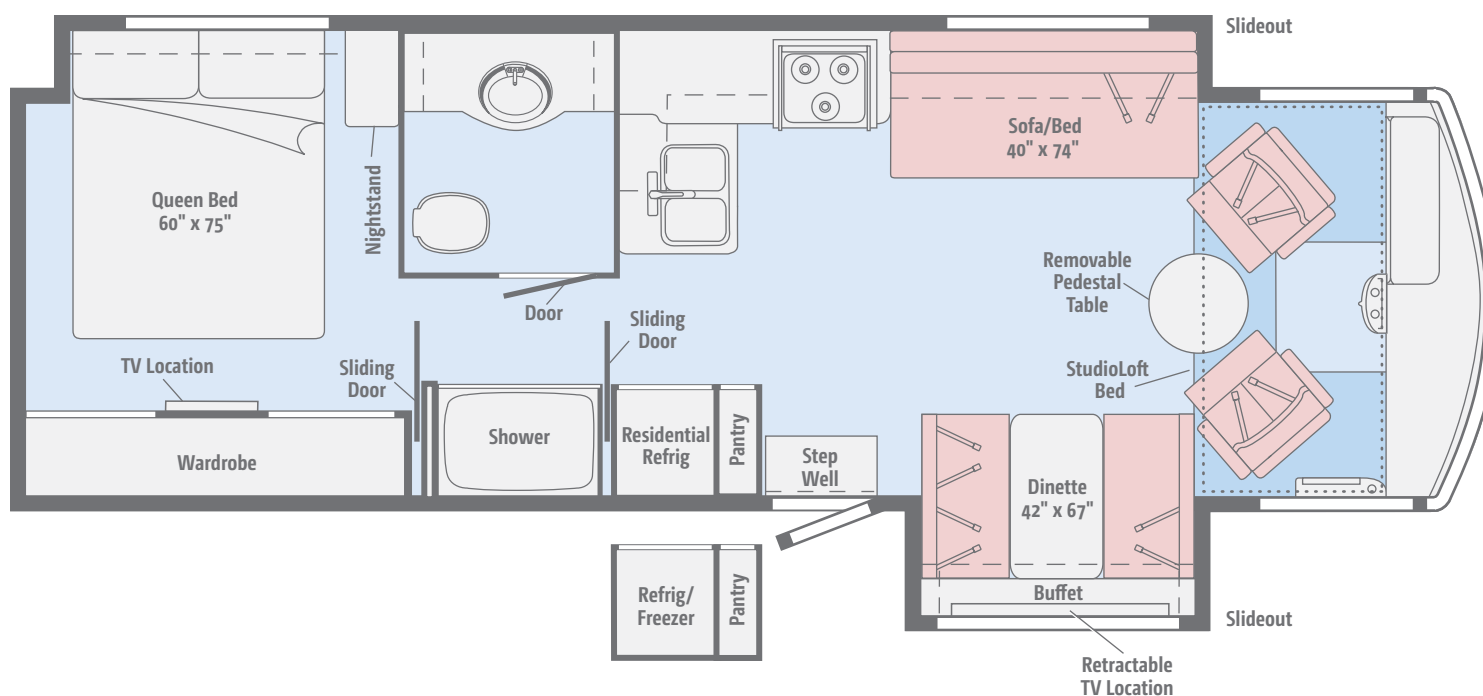


Dimensions shown are for sleeping space only and may vary due to styling differences. Dashed lines denote overhead storage areas. Floorplans and specifications are also available online at Goltasca.com.



NEW 31C

The full-wall slideout allows for your choice of a king or queen bed, plus a full-size sofa bed facing a retractable HDTV.



Dimensions shown are for sleeping space only and may vary due to styling differences. Dashed lines denote overhead storage areas. Floorplans and specifications are also available online at Goltasca.com.

The Tribute offers four fabric collections and two wood finishes.

Good Vibrations (NA with Crimson 'n Clover Exterior)



Primera



Primera Accent



Accent



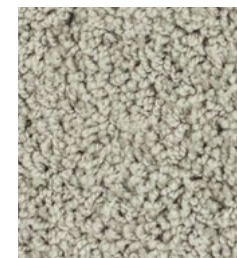
Bedspread



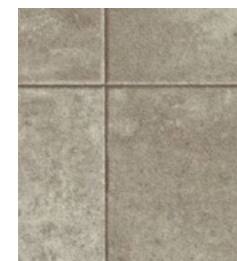
Countertop



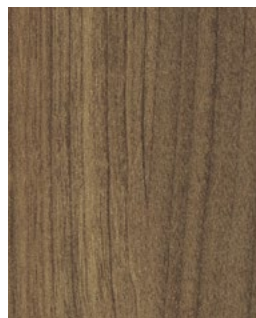
Wall Board



Carpet



Vinyl



Cherry Cola



Cream Soda

The Tribute offers four fabric collections and two wood finishes.

Calypso (Available with Crimson 'n Clover, Woodstock, and Aquarius Exteriors)



Primera



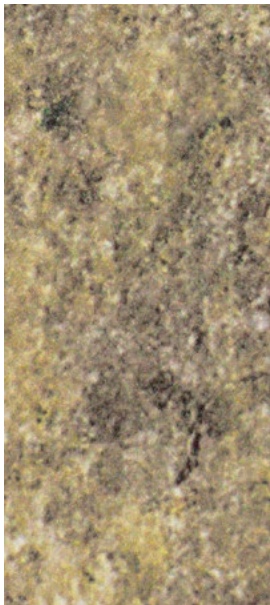
Primera Accent



Accent



Bedspread



Countertop



Wall Board



Carpet



Vinyl



Cherry Cola



Cream Soda

The Tribute offers four fabric collections and two wood finishes.

Moody Blue (NA with Crimson 'n Clover Exterior)



Primera



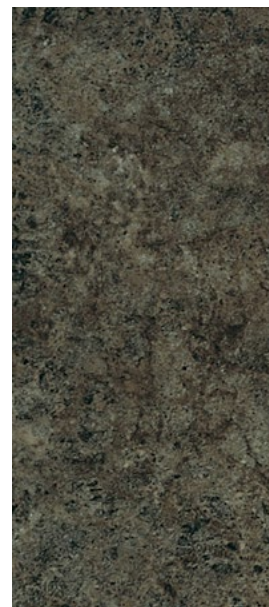
Primera Accent



Accent



Bedspread



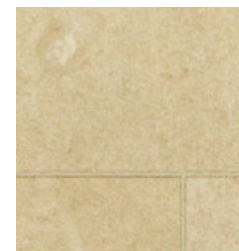
Countertop



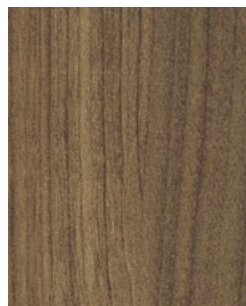
Wall Board



Carpet



Vinyl



Cherry Cola



Cream Soda

The Tribute offers two fabric collections and two wood finishes.

Corduroy (Available with Crimson 'n Clover and Woodstock Exteriors)



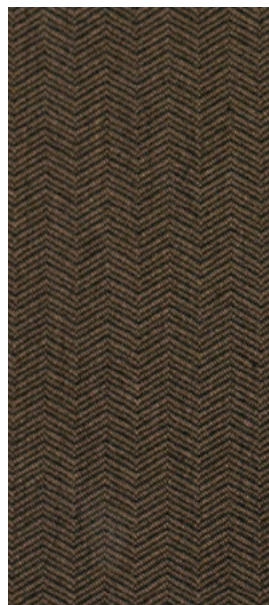
Primera



Primera Accent



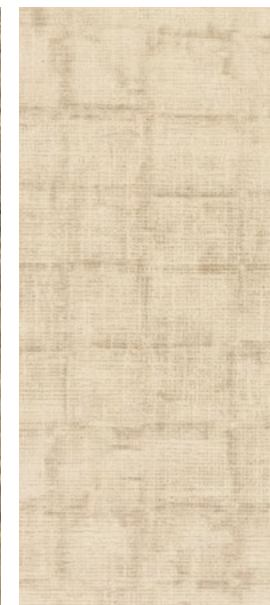
Accent



Bedspread



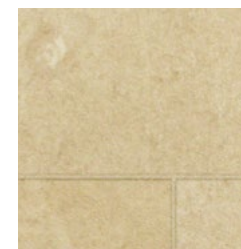
Countertop



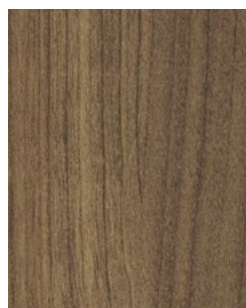
Wall Board



Carpet



Vinyl



Cherry Cola



Cream Soda

TRIBUTE Graphics

WINNEBAGO

Choose from five groovy graphics packages.



Woodstock
(Available with all Interiors)



Bell Bottom Blue
(Available with Good Vibrations and Moody Blue Interiors)



Aquarius
(Available with Moody Blue, Good Vibrations, and Calypso Interiors)



Mello Yellow
(Available with Good Vibrations and Moody Blue Interiors)



Crimson 'n Clover
(Available with Calypso and Corduroy Interiors)

Weights & Measures

	26A	27B	31C
Length	27'8"	29'4"	32'11"
Exterior Height ¹	11'9"	11'9"	11'11"
Exterior Width ²	8'5.5"	8'5.5"	8'5.5"
Exterior Storage ³ (cu. ft.)	92	113	94'
Awning Length	19'	18'	19'
Interior Height	6'9"	6'9"	6'9"
Interior Width	8'0.5"	8'0.5"	8'0.5"
Freshwater Tank Capacity ⁴ (gal.)	40	54	52
Water Heater Capacity (gal.)	6	6	6
Holding Tank Capacity - Black/Gray ⁴ (gal.)	42/42	41/53	45/62
LP Capacity ⁵ (gal.)	18	18	18
Fuel Capacity (gal.)	80	80	80
GCWR ⁶ (lbs.)	23,000	23,000	23,000
GVWR (lbs.)	16,000	16,000	18,000
GAWR - Front (lbs.)	6,500	7,000	7,000
GAWR - Rear (lbs.)	11,000	11,000	12,000
Wheelbase	158"	178"	208"

Ford® F53 Chassis

362-hp 6.8L 3-valve Triton® V10 SEFI engine, TorqShift™ 5-speed automatic transmission w/tow/haul, Hydroboost power brakes, 4-wheel ABS, 175-amp. alternator

7-pin trailer wiring

Trailer Hitch⁶ 5,000-lb. drawbar/500-lb. maximum vertical tongue weight

Automatic hydraulic leveling jacks

Stainless steel wheel liners



Ford F53 Chassis

Cab Conveniences

Cab seats hinged armrests, lumbar support, and multi-adjustable slide/recline/swivel

3-point seat belts

Radio AM/FM, Bluetooth™ ready, time/alarm clock, front auxillary input, 4 speakers

Passenger workstation w/12-volt powerpoint/USB

Movable console w/Rearview Monitor System w/Rand McNally RV GPS

Chassis/house battery radio power switch

Power-assist steering w/tilt wheel

Cruise control

Power mirrors w/defrost

Front wraparound curtain

Sunvisors

Interior

28" HDTV (26A)

32" HDTV (27B)

Dining table/buffet w/46" retractable HDTV (31C)

StudioLoft™ w/power lift and ladder (dome lights) (cab overhead)

Amplified digital TV antenna system

LED ceiling lights

MCD blackout roller shades

Full-extension drawers w/roller bearing slides

Systems monitor panel

Roof vent (lounge)

Powered roof vent (bath)

OPTIONAL EQUIPMENT

DVD player w/remote

Galley

Laminate countertop w/decorative backsplash

2-door refrigerator/freezer (26A, 27B)

2-door residential refrigerator/freezer w/icemaker (31C)

Microwave oven

3-burner range top w/oven

Flip-up countertop extension (26A)

Vented range hood

OPTIONAL EQUIPMENT

2-door refrigerator/freezer w/2 deep-cycle, Group 31 batteries (31C)

Bath

Laminate countertop

Medicine cabinet

Flexible showerhead

Shower curtain (26A)

Textured glass shower door (27B, 31C)

Skylight

Toilet w/foot pedal

Water pump switch

Bedroom

Queen bed w/bedspread (27B, 31C)

Queen bed w/mattress cover (26A)

StudioLoft bunk bed w/power lift (26A)

32" HDTV (31C)

OPTIONAL EQUIPMENT

King bed w/bedspread (31C)

Exterior

Automatic entrance door steps

Porch light

Trunk storage compartment

Powered patio awning

Exterior speaker system

Heating & Cooling System

1-15,000 BTU ducted air conditioner w/ChillGrille™ (26A, 27B)

2-13,500 BTU high-efficiency air conditioners w/Energy Management System w/ChillGrille (31C)

30,000 BTU low-profile ducted furnace (26A, 27B)

35,000 BTU low-profile ducted furnace (31C)

Electrical System

AC/DC load center, 45-amp. converter/charger (26A, 27B)

AC/DC electrical distribution system, 45-amp. converter/charger (31C)

30-amp. power cord (26A, 27B)

50-amp. power cord (31C)

4,000-watt Cummins Onan® MicroQuiet™ gas generator (26A, 27B)

5,500-watt Cummins Onan® Marquis Gold™ gas generator (31C)

2 deep-cycle, Group 24 batteries (26A, 27B)

3 deep-cycle, Group 31 batteries (31C)

Chassis and coach battery disconnect systems

Automatic dual-battery charge control

Shoreline/generator automatic changeover switch (31C)

2,000-watt inverter/charger (31C)

Automatic start system, generator (31C)
(NA w/optional 2-door refrigerator/freezer)

Auxiliary start circuit

Exterior antenna jack and AC duplex receptacle

Plumbing System

Permanent-mount LP tank

On-demand water pump

TrueLevel™ holding-tank monitoring system

Winterization Package water heater bypass valve and siphon tube

6-gallon electric ignition/LP water heater

Gravity water tank fill w/lockable door

LPG accessory connection (patio area)

City water hookup

10' sewer hose

OPTIONAL EQUIPMENT

Heated drainage system

Safety

Child seat tether anchor

LP, smoke, and carbon monoxide detectors

10 BC fire extinguisher

Ground fault interrupter

Warranty⁷

12-month/15,000-mile basic limited warranty⁸

36-month/36,000-mile limited warranty on structure⁸

10-year limited parts-and-labor warranty on roof skin⁸

FOOTNOTES

- 1 The height of each model is measured to the top of the tallest standard feature and is based on the curb weight of a typically equipped unit. The actual height of your vehicle may vary by several inches depending on chassis or equipment variations. Please contact your dealer for further information.
- 2 Floorplans feature a wide-body design – over 96." In making your purchase decision, you should be aware that some states restrict access on some or all state roads to 96" in body width. Before making your purchase decision, you should confirm the road usage laws in the states of interest to you.
- 3 The load capacity of your motorhome is designated by weight, not by volume, so you cannot necessarily use all available space when loading your motorhome.
- 4 Capacities are based on measurements prior to tank installation. Slight capacity variations can result due to installation applications.
- 5 Capacities shown are tank manufacturer's listed water capacity (WC). Actual filled LP capacity is 80% of listing due to overfilling prevention device on tank.
- 6 Actual towing capacity is dependent on your particular loading and towing circumstances which includes the GVWR, GAWR, and GCWR, as well as adequate trailer brakes. Please refer to the Operator's Manual of your vehicle for further towing information.
- 7 See separate chassis warranty.
- 8 See your dealer for complete warranty information.

Winnebago's® continuing program of product improvement makes specifications, equipment, model availability, and prices subject to change without notice. Published content reflects the most current product information at time of printing. Please consult your dealer for individual vehicle features and specifications.



Goltasca.com Has All The Answers



Visit **Goltasca.com** on your computer, smartphone or tablet for the latest product information and updates.

go LIFE

Welcome to GoLife!

Visit our lifestyle blog for motorhome news, personal travelogues, and community stories.



WINNEBAGOLIFE.COM

PREFERRED CARE PROGRAM

We back our motorhomes with best-in-class support both before and after the sale:

- 12-month/15,000-mile basic limited warranty
- 36-month/36,000-mile limited warranty on structure
- 10-year limited parts-and-labor warranty on roof skin
- Complimentary 24-hour roadside assistance program



TRIPSAVER
FAST TRACK PARTS
WINNEBAGO

- TripSaver® Fast Track Parts guarantees that in-stock warranty parts ship directly to your dealer within 24 hours
- National dealer service network



**Premium
ROADSIDE ASSISTANCE**

For more information, visit us at
WGOService.com



WIT CLUB

Join the Club, Join the Fun

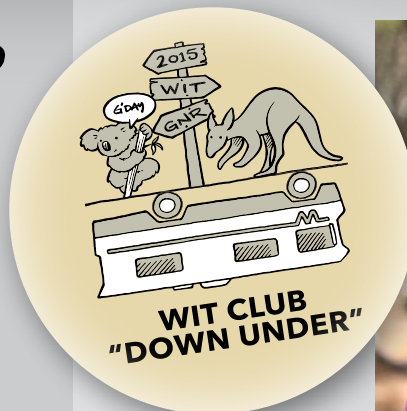
Here's the perfect way to begin your life on the road as the owner of a new Winnebago – by joining the exclusive WIT Club. Start your adventure with other fun-loving WIT Club members from across the country and get the most out of your new Winnebago motorhome.



Members enjoy:

- Caravans and rallies
- Newsletters
- Local and state group activities
- RV travel benefits

See more at **WITclub.com**



Grand National Rally

G'day mates! Explore the outback at this year's "Down Under" Grand National Rally. Each year, thousands of Winnebago owners descend upon the land down under – a.k.a. Forest City, Iowa.



Rally-goers enjoy an unforgettable week reconnecting with friends, taking tours, participating in activities, and more. Hop on down and join the adventure this July!