



ENTEGRA  
COACH®



C O R N E R S T O N E    I    A N T H E M    I    A S P I R E    I    2 0 1 5

THE QUIETEST RIDING,  
BEST HANDLING COACH  
ON THE MARKET TODAY. PERIOD.



In a world of “me-too” products, the real game changers are companies who understand that design is not just about look and feel, but also functionality. That was the inspiration behind every great product from the Model T to the iPhone. And it’s what is making the Entegra Coach line of motorhomes the envy of an industry.

Built for the long haul, Entegra Coach offers unsurpassed luxury and the confidence from knowing our designers, engineers and craftsmen have scrutinized every last detail. They continually challenge conventional thinking and in many ways have redefined how luxury coaches are conceived and ultimately brought to market. Introducing, without question, the quietest riding, best handling coach on the market today. Period.



**ENTEGRA**  
COACH®

# ASPIRE | DARE TO DREAM





FEATURES: Solid surface countertops with stainless steel sinks | Washer and dryer | Bose sound bar



FEATURES: Spacious bedroom with ceiling fan | Bathroom vanity area | King Sleep Number air mattress | Bathroom upright shower

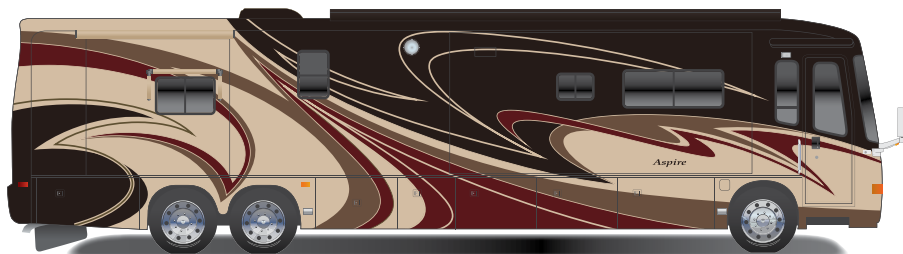


STYLISH. IN EVERY SENSE OF THE WORD.

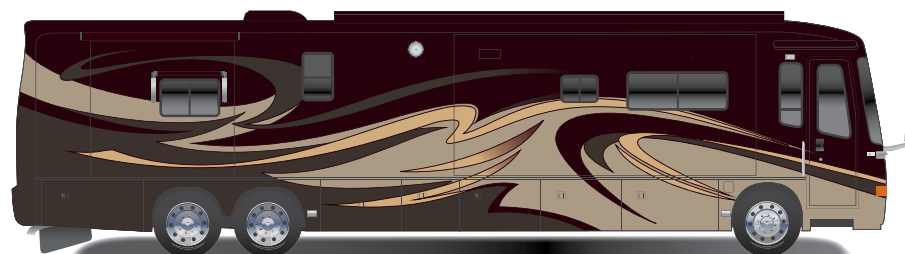


FEATURES: Driver area includes backup camera monitor and Sirius Satellite radio | Outside entertainment center | Lighted grab handle with keypad system | Multiplex lighting system | Central vacuum system

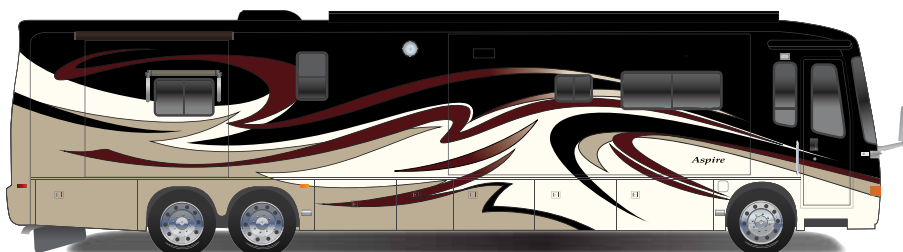
# ASPIRE | PAINT PACKAGES | SPECIFICATIONS | FLOOR PLANS



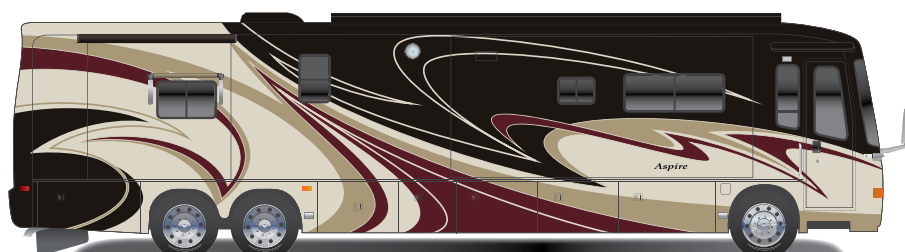
Autumn Berry



Golden Garnet



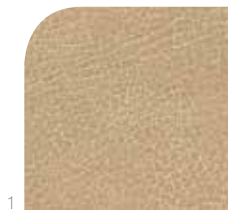
Black Pearl



Shimmering Cabernet

Floorplan	GVWR (lbs)	GCWR (lbs)	Front GAWR (lbs)	Rear GAWR (lbs)	Tag GAWR (lbs)	Wheel Base	Overall Length	Exterior Height w/ A/C & Satellite	Exterior Width	Interior Height	Fresh Water Capacity (gal.)	Gray Waste Water Capacity (gal.)	Black Waste Water Capacity (gal.)
<b>39E</b>	38,600	53,600	14,600	24,000	N/A	261"	40' 6"	12' 9"	101"	84"	80	49.75	49.75
<b>42DEQ</b>	47,660	62,660	15,660	20,000	12,000	296"	43' 1"	12' 9"	101"	84"	80	49.75	49.75
<b>42DLQ</b>	47,660	62,660	15,660	20,000	12,000	296"	43' 1"	12' 9"	101"	84"	80	49.75	49.75
<b>42RBQ</b>	47,660	62,660	15,660	20,000	12,000	296"	43' 1"	12' 9"	101"	84"	80	49.75	49.75
<b>44B</b>	47,660	62,660	15,600	20,000	12,000	320"	44' 11"	12' 9"	101"	84"	80	49.75	49.75
<b>44U</b>	47,660	62,660	15,660	20,000	12,000	320"	44' 11"	12' 9"	101"	84"	80	49.75	49.75





1



2

## LATTE

**1. Sofa & Dinette**  
Brisa Distressed Chamois

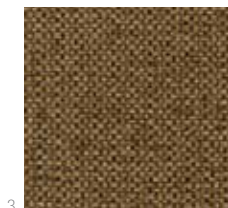
**2. Accent (pillow)**  
Bradshaw Godiva

**3. Kitchen Chair**  
Stimulus Stout

**4. Bedspread**  
Candytuft Pearl

**5. Countertop**  
LG Piza

**6. Tile**  
Porcelain Del Nord Alaska



3



4



5



6



1



2

## CABERNET

**1. Sofa & Dinette**  
Brisa Distressed Lasso

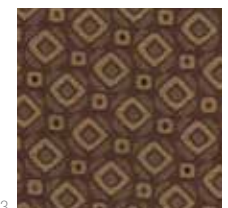
**2. Accent (pillow)**  
Mimo Morocco

**3. Kitchen Chair**  
Tippet Chocolate

**4. Bedspread**  
Grove Wenge

**5. Countertop**  
LG Piza

**6. Tile**  
Porcelain Del Nord Alaska



3



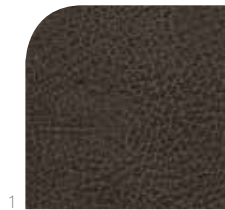
4



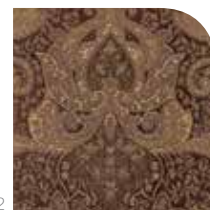
5



6



1



2

## ESPRESSO

**1. Sofa & Dinette**  
Brisa Distressed Steerhide

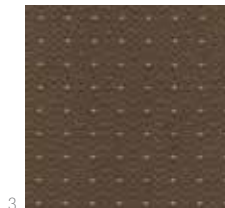
**2. Accent (pillow)**  
Bernice Cocoa NR

**3. Kitchen Chair**  
Elevations Truffle

**4. Bedspread**  
Candytuft Pearl

**5. Countertop**  
LG Piza

**6. Tile**  
Porcelain Del Nord Alaska



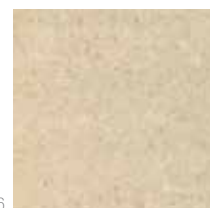
3



4



5



6



7a



7b



7c

## WOOD

**7. Wood**  
Windsor Glazed Cherry (a)  
Tuscan Cherry (b)  
Natural Cherry (c)

**8. Wood (bath)**  
Caramel Glazed Maple



8

## STANDARD BATHROOM EQUIPMENT

2-panel residential-style solid hardwood passage doors  
One-piece radius fiberglass shower  
Porcelain toilet  
Power vent  
Skylight in shower  
Solid surface countertop(s) with integrated sink

## STANDARD BEDROOM EQUIPMENT

Bose Solo sound bar  
Ceiling fan (N/A 39E)  
King Sleep Number air mattress  
Remote secure coach locking system  
Samsung 32" LED HD TV

## STANDARD CHASSIS EQUIPMENT

(2) chassis batteries  
100-gal. fuel tank (dual fill)  
10-gal. DEF tank  
15,000-lb. hitch with 7-pin plug  
170-amp alternator  
4.88 "Quiet Gear" rear axle ratio  
50-degree turning radius  
Allison 3000 MH 6-speed transmission  
All-wheel ABS brakes  
Bilstein shocks  
Cummins ISL turbocharged 450 HP engine 1,250 lb.-ft. torque at 1,400 RPM  
Engine block heater  
Front axle I-beam 15,660-lb. wide track  
Goodyear G670 295/80R 22.5 tires (front) and G670 275/80 R 22.5 tires (rear)  
Raised rail chassis  
Rear axle 20,000-lb., tag axle 12,000-lb.  
Remote air connection  
Side-mounted radiator  
Spartan Mountain Master chassis  
Tag axle auto weight release  
Two-stage Jake brake

## STANDARD CONSTRUCTION FEATURES

2" x 4" floor truss construction  
2-1/2" wall with welded tubular construction  
3/4" 7-ply plywood main floor decking  
4-1/2" arched aluminum truss roof  
Aluma-Tru Superstructure construction on 12"-16" centers  
Electric-powered slideouts  
Enclosed, insulated and heated floor and thermostat controlled heating in storage area  
Frameless flush-mounted slideout rooms  
Fully decked roof with 3/8" plywood  
One-piece fiberglass roof  
Polar Pack insulation with reflective Flexfoil: floor (R-33), roof (R-24), sidewalls (R-16), front and end caps (R-22)  
Smooth high-gloss, gel-coat fiberglass exterior walls  
Steel-reinforced front cap and windshield frame  
X-Bridge frames welded into chassis frame

## COCKPIT AMENITIES

12V auxiliary in-dash receptacle - (1) in center, (1) at driver's area, (1) at passenger's area  
Adjustable foot pedals  
Battery boost switch  
CB prep antenna  
Chassis battery disconnect  
Color back-up camera and monitor

High gloss 12" x 24" porcelain tile with glass inlay  
Hydraulic automatic leveling jack system  
Powered flush stepwell cover  
Powered front sun visors and privacy shade  
Roller side sun visors and privacy shades  
Samsung 32" LED HDTV  
Side cameras with turn signals  
Sirius radio and tuner  
Spartan Message Center with LCD display featuring: odometer, tachometer, instantaneous fuel economy, fuel remaining, outside air temp., coolant temp., engine oil temp. and pressure, transmission temp., turbo boost pressure, air pressure, diagnostic functions, fault codes, service reminders, percentage of engine load, trip meter, speed and voltage  
Touch-screen AM/FM/CD/DVD with Rand McNally GPS navigation, Bluetooth and 4 speakers  
Ultraleather, power adjustable driver and passenger seats with integrated 3-point lap and shoulder safety belts  
Ultra-Vision one-piece wrap-around tinted windshield  
VIP SmartWheel steering wheel with integrated controls for cruise and wipers

## STANDARD EXTERIOR EQUIPMENT

3M front protective film  
Touch control for hydraulic automatic leveling jack system  
Carefree power patio awning with LED lights  
Carefree power entrance door awning with LED lights  
Carefree slideout and window awnings  
Chrome, heated, remote control, side-view mirrors  
Daytime running lights  
Docking lights  
Electric-powered, double-step entrance  
Exterior 40" Samsung LED HDTV with Sony Dual DIN CD/DVD player and 4 speakers  
Exterior utility center, heated and enclosed with second system monitor panel  
Fog lights  
Frameless, dual-pane, tinted, safety-glass windows  
Full-width rear mudflap  
Keyless entry with key fob  
Lighted heavy-duty grab handle with keypad system  
Roof ladder  
Slideout cargo tray  
Sliding battery tray  
Winegard in-motion dome satellite dish

## HEAT, POWER AND WATER EQUIPMENT

15,000-BTU low profile central A/Cs (3) with heat pump, digital thermostat, Drain tubes (2 A/Cs 39E)  
2,800-watt pure sine wave inverter with (4) 6V batteries  
5-watt solar panel (for chassis batteries)  
50-amp quick-connect power cord with electric reel  
50-gal. propane gas tank  
Aqua-Hot 400-LP hydronic water and heating system with in-floor heat throughout  
Black holding tank sprayer  
Energy Management System  
Onan 10,000-watt diesel generator with auto gen start on slide-out tray  
Power auto rewind water hose  
SeeLevel™ tank monitoring system  
Solar power prep  
Total coach dual system water filter  
Winterizing kit

## STANDARD INTERIOR EQUIPMENT

Aire-Secure travel locks for passage doors  
Samsung 46" LED HDTV (42DLQ, 42RBQ, 44U)  
Samsung 50" LED HDTV (42DEQ, 44B)  
Bose CineMate 1 SR digital home theater speaker system  
Ball bearing drawer guides with full-drawer extension  
Central vacuum system with vac pan  
Day/night solar roller shades throughout  
High gloss 12" x 24" porcelain tile floor with glass inserts  
LED recessed 12V lighting package  
Lights at entrance steps  
Multiplex lighting  
Power HDTV antenna with signal booster  
Prep for satellite dish for roof  
Slideouts controlled with remote and wall switch  
Stackable washer and dryer  
Ultraleather furniture

## STANDARD KITCHEN EQUIPMENT

Cutting board  
High gloss 12" x 24" porcelain tile with glass inserts  
Large deep drawer with waste basket  
Pullout cabinet extension with countertop  
Recessed, glass top gas range  
Samsung 1.7 cu. ft. convection microwave oven  
Samsung residential 23 cu. ft. refrigerator with ice maker and water dispenser  
Silverware drawer, divided for utensils  
Solid surface countertops with stainless steel sink

## STANDARD SAFETY EQUIPMENT

Carbon monoxide detector  
Deadbolt lock on entrance door  
Egress window  
Fire extinguisher  
Lap safety belts in living area  
Motion sensor security lights (2)  
Propane alarm  
Security system  
Smoke alarm  
Third brake light

## OPTIONS

100" sofa with ottoman recliner and hide-a-bed (N/A 39E, 42RBQ 42DLQ)  
Canadian standards  
Fireplace  
Free-standing table with 4 chairs and hide-a-bed, sofa lounge curb side (N/A 42DEQ, 44B and 44U)  
Premium entertainment system (mandatory option)  
Shaw Direct Canada Satellite TV  
Winegard Trav'ler satellite dish with DIRECTV



# REDEFINING THE STANDARD.

1. **Spartan Chassis.** The industry's premier foundation.
2. **Exclusive X-Bridge™ Frame.** It's what we do with that chassis that sets us apart. We build on Entegra's exclusive X-Bridge™ frame to give our foundation even more rigidity, meaning your suspension — and not the chassis — weathers every pothole.
3. **Enhanced Visibility.** Thanks to a shallower dashboard design.
4. **Superior Maneuverability.** By positioning the cab over the tires, Entegra Coach has unsurpassed maneuverability.
5. **Ultra-Vision Windshield.** This one-piece, wrap-around windshield features a reinforced cap and frame engineered to provide optimal strength where you need it most.
6. **Wood Sub-Flooring.** Boasting one of the industry's thickest floors, Entegra Coach utilizes wood, a material that doesn't transmit energy and minimizes road noise and vibrations.
7. **Tile Around Cabinetry.** While other manufacturers place cabinets on top of tile, which can lead to squeaks or even cracking, we lay porcelain tiles around our cabinets so they can be screwed directly to the wood floor.
8. **Batting Insulation.** Our walls, along with our front and rear caps, feature tucked-and-glued batting insulation, the same kind of fiberglass insulation found in sound-absorbing theater rooms.
9. **Vinyl Padded Ceilings** also help absorb sound.
10. **Sur-seal Entry Door Lock** features a complete-seal mechanism to prevent whistling.
11. **Wood and Steel Construction.** 2x4 wood floor construction placed on a steel sub-structure with fiberglass batting insulation work together to absorb sound and vibrations.
12. **Commercial-Grade Plywood.** 3/4" plywood floor is screwed and glued down using 23 2" screws at each seam. An uncompromising technique that outlasts standard tongue-and-groove construction.
13. **Aluma-Tru™ Superstructure.** The framework of our walls is spaced 16" or less apart, giving Entegra more weight-bearing aluminum in its walls than any other coach. Combined with Flexfoil, 1/2" foam and fiberglass, our walls have an R-16 insulation value.
14. **Plywood Walls.** Our interior wall board is backed by 1/2" plywood construction.
15. **Roof.** Entegra's roof combines crowned aluminum truss rafters on 16" centers with Flexfoil, fiberglass insulation and 3/8" plywood decking to complete our unwavering design.

# ENTEGRA COACH

Like a fine home, quality begins with the foundation. That's why we start with the Spartan chassis, then add our exclusive, rigid X-Bridge™ frame to strengthen overall flexibility. Minimizing stress in this way reduces windshield movement and noise plus it diminishes the potential for cracks. The ability to absorb vibrations during travel is further enhanced by our unique wood floor construction which features insulation and 3/4-inch marine-grade plywood.

Continuing our commitment to quality, Entegra Coach employs a proprietary hung wall structure built on 2"x3" aluminum studs on 16-inch centers. Key openings like windows, doors and slide-outs are reinforced with additional studs.

Wallboard and Polystyrene is glued to the inside of the wall, followed by a layer of Astrofoil insulation and residential grade batting insulation. Walls are then finished off with a solid piece of fiberglass. When wall construction is complete, there are no gaps and the result is an incredibly sound-proof coach.

Our attention to detail knows no bounds — from the ground up, inside and out. We take great pride in the craftsmanship mechanically and aesthetically, using only materials worthy of our name and standards including Amish hand-crafted cabinetry for the best look and longevity in the industry.



**ENTEGR A**  
COACH®

## A GAME CHANGER FROM THE GROUND UP

### Special Features

- Flush-mounted slide-outs for better aerodynamics and more curb appeal
- Frameless dual-paned windows
- Integrated driver and passenger seat belts attached to the ultra comfortable chairs, not the wall
- Passage door locks which engage automatically when the parking brake is released
- Keyless entry pad for added security and convenience
- A sure seal front door to virtually eliminate wind noise
- Courtesy lights for ease of entry in the dark

### Built on the Bontrager Family Promise

Entegra Coach is owned and operated by the largest privately-owned RV manufacturer in the world, with nearly 50 years of experience in the industry. Why is that important? Because a family business puts its name on the line every time a customer makes a purchase. We understand that quality, integrity, and delivering on every promise is vital to success.

In that same spirit of family, we make a pledge to all of our customers. We call it the Bontrager Family Promise. It is based on the five principles upon which we have built our business: honesty, reliability, thoroughness, accessibility and responsiveness. We promise to try to do what's best for you, our customer. At all times. Without compromise.

That's our commitment to you. And to back it up, you should know that we have the best warranties in the business, including a two-year warranty, a five-year structural warranty and three years of CoachNet Platinum level emergency road service. To learn more visit **EntegraCoach.com**.

## Entegra Coach Warranty

Our family is proud to stand behind every Entegra Coach we build. Our commitment is to provide the highest level of products and services possible. We invite you to compare our warranty with other manufacturers – we think you'll find that your satisfaction is our lifelong passion.

The Entegra Coach ("Entegra") warranty covers this recreational vehicle ("RV"),

- When used only for its intended purpose of recreational travel and camping.
- For two (2) years, or the first twenty-four thousand (24,000) miles of use, whichever occurs first.
- In addition, it covers the structural integrity (defined as something essential to the manner of construction during the assembly process covering the sidewall framing, roof framing and floor framing) for five (5) years.
- It covers RV's sold in the United States, U.S. Territories and Canada only.
- The warranty periods begin on the date that the RV is delivered to the first retail purchaser by an independent, authorized dealer of Entegra; or, if the dealer places the vehicle in service prior to retail sale, on the date the RV is first placed in such service.
- In the event that a substantial defect in material or workmanship, attributable to Entegra, is found to exist during the warranty periods, it will be repaired or replaced, at Entegra's option, without charge to the RV owner, in accordance with the terms, conditions and limitations of this limited warranty.

For a copy of the published limited warranty with full terms and conditions, please contact your local Entegra Coach dealer.

## Roadside Assistance

We promise peace of mind in countless ways with the Entegra Coach Customer First Roadside Assistance program, yours at no cost during your first three years of ownership. Offered through CoachNet, the country's largest RV emergency road service, this program gives you immediate access to dependable roadside assistance and support services with a simple phone call.

- 24/7 technical support and assistance technicians
- Service appointment assistance
- Mobile mechanic
- Emergency road towing and winching
- Delivery of emergency fluids
- Flat tire service
- Jump start/battery boost
- Lockout service



**ENTEGRA**  
COACH®

Entegra Coach, Inc.  
P.O. Box 460, Middlebury, IN 46540  
[EntegraCoach.com](http://EntegraCoach.com)

See dealer for further information and pricing. All information in this brochure is the latest available at the time of publication. Entegra Coach reserves the right to make changes and to discontinue models without notice or obligation. Photos in this brochure may show optional equipment and props for photography purposes only. Video screens and monitors are simulated. RVs built for sale in Canada may differ to conform to Canadian Codes. ©2014 Entegra Coach, Inc. 30K Printed in U.S.A. 8/14.

Gross Vehicle Weight Rating (GVWR): The maximum permissible weight of the motor coach, including the Unloaded Vehicle Weight (UVW) plus passengers, personal items, all cargo, fluids, options, and dealer-installed accessories. The GVWR is equal to or greater than the sum of the UVW and the Cargo Carrying Capacity. Gross Axle Weight Rating (GAWR): The maximum allowable weight each axle assembly is designed to carry, as measured at the tires, therefore including the weight of the axle assembly itself. Gross Combined Weight Rating (GCWR): The maximum allowable combined weight of the motor coach used as a tow vehicle and the attached towed vehicle.