

# PROVIDENCE®



## THE LUXURY OF HOME

Surround yourself with luxurious details. Providence gives you all the comforts of home, meticulously crafted to your tastes—so you never have to stop living stylishly. No matter where Providence takes you, you'll always be enveloped in luxury.





## WHY BUY PROVIDENCE?

**Impressive Exterior** Providence makes a striking first impression with its commanding size, sparkling paint and obvious attention to detail.

**Cummins® 380-450HP Diesel Engine** As one of the finest performing diesel engines in the world, the Cummins® ISC 8.3L engine provides mighty power underfoot.

**Sophisticated Décor** Travel surrounded by sumptuous elegance, where everything delights the eye. Providence elevates adventure to a new level of luxury.

**Top-of-the-Line Components** Providence is equipped with high-end brand names that carry the prestige and quality you expect. The appliances, electronics and furnishings are top-notch.

**Upscale Conveniences** To make life more comfortable, Providence contains step-saving features at every turn. It's as if we anticipated your every need.





## 2012 GRAPHICS AND DÉCOR

## PROVIDENCE

Both inside and out, we offer a wide selection of colors, styles and finishes. From the moment you lay your eyes on a Fleetwood RV, the high-style graphics and décor collection welcome you with gracious beauty and contemporary design. We've paid attention to every detail. So wherever you are, you'll feel right at home.



BLACK GOLD



AUTUMN GROVE



ARTISAN STONE



ARTISAN SPICE



MOJAVE TRAIL

	CHOCOLATE BISQUE	MAPLE SYRUP	SILVER LINEN		CABINETRY
SOFA				BROWN SUGAR	
ACCENT					
BEDSPREAD					
COUNTERTOP				WARM HONEY	
FLOORING					
CARPET					

# STANDARD FEATURES AND OPTIONS

## STANDARD FEATURES

### INTERIOR THROUGHOUT

- 20,000/25,000 BTU Dual Furnaces (40K)
- 25,000/34,000 BTU Dual Furnaces (42P, 42W)
- Aqua-Hot® Heating System 50,000 BTU (House & Water) (42M-Standard/42P-Available)
- 84" Interior Ceiling Height
- Complete PEX Plumbing System
- Crown Molding w/Decorative Corner Caps
- Manual Double Roller Shades
- Deluxe Roller Bearing, Full-Extension Drawer Guides & Transit-Ship Locks
- Demand Water Pump w/Filter
- Dual Roof-Mounted, High-Efficiency A/C w/Heat Pump, w/Solar Panel on Front A/C
- 3 Roof-Mounted, High-Efficiency A/Cs (42' Models)
- Solid Wood Face Frame Cabinets
- Hardwood Cabinet Doors/Drawers
- Solid-Surface Countertops and Sink Covers
- Vinyl Padded Ceiling
- Wall Switches (Includes Switches for Ceiling Lights & Vents)
- Water Heater Bypass
- Whole Coach Water Filtration System
- Wood Finish Return-Air Intake for Furnace
- 16-Gallon Output Water Heater (N/A 42M)
- Central Vacuum System
- Stackable Washer/Dryer

### DRIVER CONVENIENCE

- Adjustable 3-Point Seatbelts at Driver & Front Passenger Seats (with adjustable shoulder straps)
- Sony® AM/FM/CD/Navigation Dash Radio
- Color Back-Up Monitor w/Side Cameras Integrated in Mirrors
- Auxiliary Start Circuit
- Backlit Switches & Gauges
- Battery Disconnect System
- Cruise Control
- Driver/Passenger Powered Side Shades
- Driver/Front Passenger Ultraleather™ Captain's Chairs w/Reclining Back/Slide Controls/Power/Heated/Adjustable Arms
- Denso® High-Output Auto A/C Heater Combo
- Passenger Armrest w/Integrated Magazine Rack
- Passenger Seat w/Power Footrest & Adjustable Armrest
- Power Driver/Front Passenger Sun Visors
- Radio Switch Main/Auxiliary Power
- Soft-Surface Automotive Dash
- Smart Wheel with Tilt/Telescoping Steering Wheel

### GALLEY

- 1.7 cu.ft. Convection Microwave Oven w/Stainless Steel Front
- Dometic® 12 cu.ft. 4-Door Stainless Steel Refrigerator w/Icemaker and Water Dispenser
- 2-Burner, High-Output Electric Flat Panel Cooktop
- Adjustable Cabinet Shelves (Select Cabinets)
- Fan-Tastic® Power Roof Vent w/Wall Switch
- Polished Porcelain Tile with Deco Inserts
- Large, Double Solid-Surface Sink

- Moen® Single-Lever Galley Faucet w/Pullout Sprayer
- Under-Galley Shelving & Wastebasket
- Window Over Sink

### LIVING ROOM

- Sony® 32" LCD HDTV (40K)
- Sony® 40" LCD HDTV Midship (42P, 42M)
- DSS/Mobile Auto-Tracking Satellite Dish (Covered)
- Sony® DVD Home Theater Sound System w/Hidden Surround Sound Speakers
- Polished Porcelain Tile with Deco Inserts
- Comfort Fit by Villa® Residential Seat Styling
- TV Antenna w/Signal Booster
- Ultraleather™ Sofa Bed (Select Models)
- Ultraleather™ Sofa Sleeper (Select Models)
- Ultraleather™ Love Seat (Select Models)

### BEDROOM

- Bedspread w/Décor Pillows
- Cabinet Storage Above the Bed
- Coffin Ceiling
- Mirrored Wardrobe Doors
- Remote Generator Start
- Queen Bed Air Mattress
- Ventilated Rear Wardrobe w/Cedar Lining, Carpeted Floor & Wire Organizer
- Wardrobe Lighting
- Bedroom Entertainment Center w/Sony® 32" LCD HDTV

### BATHROOM

- Cabinet Toe Kicks
- Fan-Tastic® Power Roof Vent w/Wall Switch
- Hardwood Bath Door/Trims
- Molded Shower Enclosure w/Skylight
- Porcelain Toilet w/Water Saver
- Solid-Surface Sink

### SAFETY/CONVENIENCE (INTERIOR)

- Carbon Monoxide Detector/Alarm
- Energy Management System (EMS) w/Soft Start
- Fire Extinguisher
- Multiple Seatbelt Locations
- Propane Detector/Alarm
- Smoke Detector/Alarm
- Neutral Loss Protection

### EXTERIOR THROUGHOUT

- Entertainment Center w/Sony® 32" LCD HDTV & AM/FM/CD/DVD Radio
- 120V/12V AC/DC Converter
- 2,000-Watt Pure Sine Wave Inverter w/Remote
- 4-Point Automatic Levelers
- 50-Amp Service
- 8.0 kW Onan® Quiet Diesel Generator
- Awning Rail/Drip Molding (Both Sides)
- Dual Battery Charge Control
- Dual-Pane Windows w/Screens
- Fiberglass Roof
- Fiberglass Front Quarter Panels
- Fiberglass Front/Rear Caps w/High Mounted Taillights
- Fiberglass Wheel Well Trims
- Full-Body Paint
- Remote/Heated Rear-View Mirrors
- Utility Compartment w/Exterior Shower

- Water Pump Switch (Multiple Locations)
- Weather Pro Power Awnings (Patio Awning Includes Wind Sensor)
- Front & Mid-Coach Docking Lights

### AUTOMOTIVE

- Aluminum Wheels
- Fog Lamps
- Large One-Piece Bonded-in Windshield
- Mud Flaps
- Color Rear & Side-Vision Cameras
- Windshield Wipers w/Wet Arm
- Tire Valve Extenders
- Underhood Utility Light
- Diamond Shield Clear Front Protective Mask

### SAFETY/CONVENIENCE (EXTERIOR)

- Carbon Monoxide Detector/Alarm
- Automatic Generator Start System
- ABS Air Brakes
- 20' Sewer Hose
- Automotive Safety Glass
- Central Electrical Panel
- Daytime Running Lights
- Doorside Patio Receptacle
- Easy Sweep Flooring at Entry Step
- Entry Door w/Screen Door & Deadbolt Lock
- Four 6V/Deep-Cycle House Batteries
- Keyless Entry Remote
- Lighted Entry Assist Handle
- Park Cable Receptacle
- Porch Light
- Power Entry Step
- Rear Side Marker Lights
- Remote/Heated Rear-View Mirrors
- Roof Ladder
- Toilet Tank San-T-Flush™ System
- Touch Sensor Tank Monitoring System
- Utility Compartment w/Exterior Shower

### STORAGE

- Continuous One-Piece Compartment Bulb Seal
- Hidden, Stainless Steel Latch Rods
- Insulated Aluminum Luggage Doors w/Single Paddle Metal Latches & Stainless Steel Hinges
- Lighted Luggage Compartments
- Pass-Through Storage
- Side Swinging Luggage Doors

## BODY STRUCTURE

- Aluminum Interlocking Floor/Wall/Ceiling Framing
- Heated Water & Holding Tank Compartments
- Molded Fiberglass Radius Roof w/Ducted A/C
- Vacu-Bond® Upper/Lower Floors
- Power Bridge Chassis™ (Fleetwood Exclusive) (40' Models)
- Liberty Chassis (42' Models)

## OPTIONS

### INTERIOR

- CSA Package (Canadian Specs)\*\*

### GALLEY

- GE® 22 cu.ft. Residential Refrigerator w/Two Additional Batteries & Additional Inverter
- Dishwasher

### LIVING ROOM

- Sony® 32" LCD HDTV in Front Overhead (40K, 42P, 42M)
- Ultraleather™ U-Shaped Dinette/Sofa (40K, 42M, 42W)
- Ultraleather™ U-Shaped Dinette/Recliner (42P)
- Dual Free-Standing Recliners (42W)
- Facing Dinette

### BEDROOM

- Queen Bed with Memory Foam Mattress
- King Bed with Memory Foam Mattress
- King Adjustable Air Mattress

### EXTERIOR

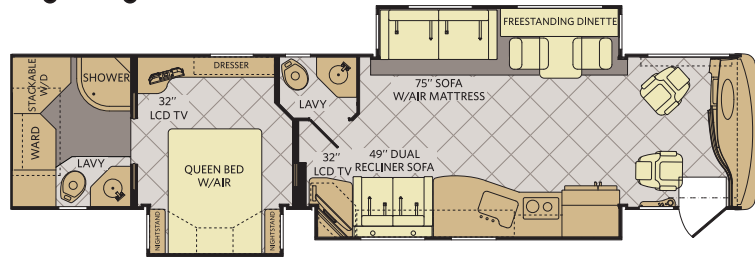
- Exterior Grill and Kitchenette
- Window Awning Package
- 3rd Roof A/C (40')
- 1st Full Bay 90" Slide Tray
- 1st Full Bay 36"/54" Slide Trays
- 2nd Full Bay 90" Slide Tray (42' Models)
- 2nd Full Bay 36"/54" Slide Trays (42' Models)
- 2nd Full Bay 54" Slide Trays (40 K)

## FLEETWOOD ADVANTAGES

- Vacu-Bond® Walls w/Smooth High-Gloss Exterior Fiberglass
- Power Bridge Chassis™ (Fleetwood RV Exclusive)
- Liberty Chassis® (42' Model Only)
- Large One-Piece Bonded-in Windshield
- Pass-Through Storage
- Side Swinging Luggage Doors (Select Doors)
- Sony® LCD HDTVs
- Sony® Surround Sound DVD/AM/FM System
- Deluxe Roller Bearing, Full-Extension Drawer Guides
- 84" Interior Ceiling Height

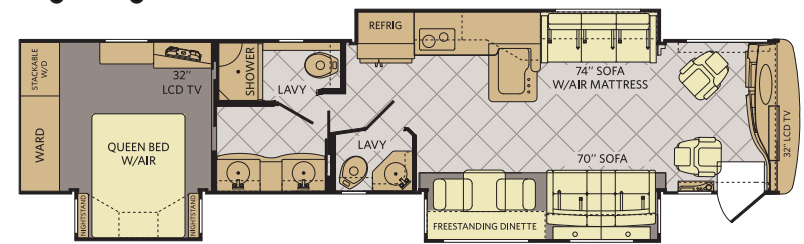
\*\*CSA Standards may require substitution or deletion to achieve conformance

# FLOOR PLANS

**40K**


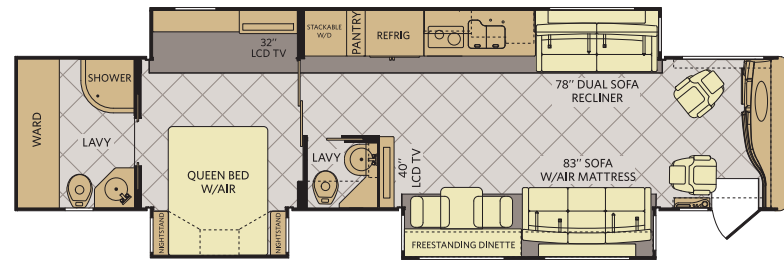
INTERIOR STORAGE CAPACITY: 193 CU. FT.  
EXTERIOR STORAGE CAPACITY: 208 CU. FT.

Available options: 087, 107, 144, 635, 830, 853, 854, 856

**42W**


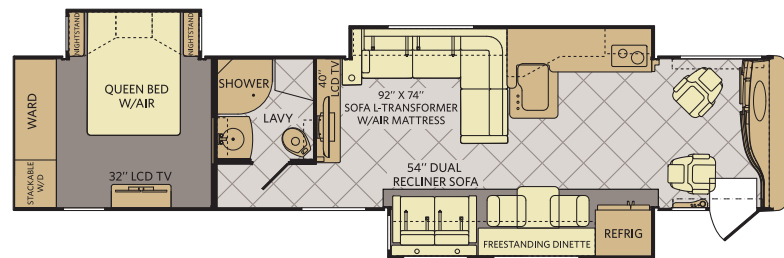
INTERIOR STORAGE CAPACITY: 197 CU. FT.  
EXTERIOR STORAGE CAPACITY: 188 CU. FT.

Available options: 107, 144, 197, 635, 830, 853, 854, 856

**42M**


INTERIOR STORAGE CAPACITY: 207 CU. FT.  
EXTERIOR STORAGE CAPACITY: 188 CU. FT.

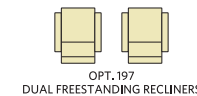
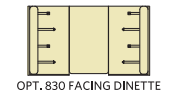
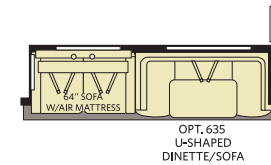
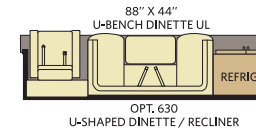
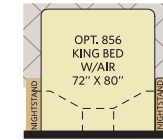
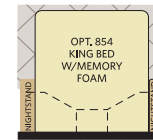
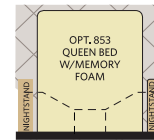
Available options: 087, 107, 144, 635, 830, 853, 854, 856

**42P**


INTERIOR STORAGE CAPACITY: 200 CU. FT.  
EXTERIOR STORAGE CAPACITY: 188 CU. FT.

Available options: 087, 107, 139, 144, 630, 830, 853, 854, 856

## FLOOR PLAN OPTIONS



# WEIGHTS & MEASUREMENTS

CHASSIS	POWER BRIDGE®		LIBERTY®	
MODELS	40K	42M	42P	42W
Wheelbase (inches)	276"	302"	302"	302"
GVWR (lbs) <sup>1</sup>	32,400	44,600	44,600	44,600
Front GAWR (lbs) <sup>2</sup>	12,400	14,600	14,600	14,600
Tag Axle GAWR	N/A	10,000	10,000	10,000
Rear GAWR (lbs) <sup>2</sup>	20,000	20,000	20,000	20,000
GCWR (lbs) <sup>3</sup>	42,400	59,600	59,600	59,600
Hitch Rating Weight (lbs) <sup>1</sup>	10,000	15,000	15,000	15,000
Tongue Weight (lbs) <sup>1</sup>	1,000	1,500	1,500	1,500
Fuel Capacity (gal)	100	150	150	150

## POWER BRIDGE CHASSIS (40' MODEL)

**Model:** Freightliner® XCM Series  
**Engine:** Cummins® 8.3L ISC  
**Transmission:** Allison® 3000 MH 6-Speed  
w/Electronic Shifter

**Alternator:** Delco Remy 160 Amp  
**Torque:** 1,050 lb-ft @ 1,400 RPM  
**Horsepower:** 380HP

## LIBERTY CHASSIS (42' MODELS)

**Model:** Spartan®  
**Engine:** Cummins® 8.9L ISL  
**Transmission:** Allison® 3000 MH 6-Speed  
w/Electronic Shifter

**Alternator:** Leece Neville 170 Amp  
**Torque:** 1,250 lb-ft @ 1,400 RPM  
**Horsepower:** 450HP

## DIMENSIONS & CAPACITIES

MODELS	40K	42M	42P	42W
Overall Length (inches) <sup>4</sup>	41' 9.5"	43' 6"	43' 6"	43' 6"
Overall Height (with A/C)	12' 10"	12' 10"	12' 10"	12' 10"
Overall Width (maximum) <sup>5,6</sup>	102"	102"	102"	102"
Interior Height (maximum)	84"	84"	84"	84"
Interior Width (maximum)	96"	96"	96"	96"
Fresh Water Holding Tank (gal)	100	100	100	100
Grey Water Holding Tank (gal)	75	60	60	60
Black Water Holding Tank (gal)	50	40	40	40
Appliance Propane Tank (gal) (WC) <sup>7</sup>	38.7	28.2	28.2	28.2
Water Heater Tank (gal)	10	10	10	10

### Liquid Weight Reference:

Water (gal) = (8.3 lbs/3.8 kgs) Fuel (gal) = (7.1 lbs/2.8 kgs) Propane (gal) = (4.2 lbs/1.9 kgs)

### Metric Conversion:

Multiply pounds x 0.453 to obtain kilograms. Multiply gallons x 3.785 to obtain liters.

Multiply liters x 61 to obtain cubic inches.

- GVWR (Gross Vehicle Weight Rating) is the maximum permissible weight of this fully loaded motor home. The GVWR is equal to or greater than the sum of the (UVW) unloaded vehicle weight plus the (OCCC) occupant cargo-carrying capacity.
  - GAWR (Gross Axle Weight Rating) is the maximum permissible loaded weight a specific axle is designed to carry.
  - GCWR (Gross Combined Weight Rating) is the value specified by the motor home manufacturer as the maximum allowable loaded weight of this motor home with its towed vehicle. Towing and braking capacities may be different. Refer to Fleetwood and chassis manufacturer's manuals for complete information.
  - Length measured from front bumper to rear bumper (excludes accessories).
  - Excludes safety equipment and awnings.
  - Motor homes feature a body width over 96" which will restrict your access to certain roads. Before purchasing, you should research any state and/or province road laws which may affect your usage.
  - Tank manufacturer's listed water capacity (WC). Actual propane capacity is 80% of water listing as required by the safety code.
- † The chassis manufacturer recommends the installation of a supplemental brake control system to activate the brakes on the vehicle or trailer you are towing. Hitch receiver ratings expressed are maximum for the hitch receiver installed and may require the purchase of additional equipment that is dependent on the weight of the towed load. Consult with hitch receiver manufacturer for further information.
- \* UVW and OCCC are found on the label containing the federal certification tag in each RV.

**IMPORTANT—PLEASE READ:** Product information, photography and illustrations included in this publication were as accurate as possible at the time of printing. For further product information and changes, please visit our website at [www.fleetwoodrv.com](http://www.fleetwoodrv.com) or contact your local Fleetwood RV dealer. Prices, materials, design and specifications are subject to change without notice. All weights, fuel, liquid capacities and dimensions are approximate. Fleetwood RV has designed its recreational vehicles to provide a variety of uses for its customers. Each vehicle features optimal seating, sleeping, storage and fluid capacities. The user is responsible for selecting the proper combination of loads (i.e., occupants, equipment, fluids, cargo, etc.) to ensure that the vehicle's capacities are not exceeded.



## WHY FLEETWOOD RV?



### Quality

There's no cutting corners. Skilled craftsmen build every Fleetwood RV for maximum durability and longevity.



### Trust

More people trust Fleetwood RV. After all, we've spent over 60 years perfecting RVs, earning the loyalty of generations of RVers.



### Passion

We're truly passionate about the RV lifestyle. Fleetwood RV was founded by RV enthusiasts, and that tradition continues today.



### Safety

You've got precious cargo. So we've engineered dozens of innovative safety features into our motor homes to give you more peace of mind.



### Service

Help is nearby with 24/7 emergency roadside assistance through **Coach-Net**.\*\* And when you need an upgrade or repair, you'll find Fleetwood RV dealers all across North America ready to assist you.



### Warranty

Exclusive RV ownercare warranty.  
See your Fleetwood RV dealer for details.

\*All 2012 Fleetwood RV motor homes include a 1-year membership to Coach-Net.

\*\*For complete info, see your Fleetwood RV dealer.

# PROVIDENCE

### RV OWNERCARE\*\*

Limited one-year/15,000-mile coach warranty and three-year/45,000-mile structural warranty, whichever occurs first, and it is fully transferable for the first 12 months. RV OWNERCARE is one of the RV industry's most comprehensive programs and includes systems, appliances, components and construction, with no deductible and no service charge. RV OWNERCARE coverage is provided by a company that will be around in the future to service your needs. See your nearest Fleetwood RV dealer for a full explanation of benefits and restrictions.

### CONTACT US

To locate a dealer near you, visit our website at [www.fleetwoodrv.com](http://www.fleetwoodrv.com) or call 1-800-322-8216. We can also be contacted at Fleetwood RV Customer Relations, P.O. Box 1007, Decatur, IN 46733.

### FLEETWOOD RV MOTOR HOME CLUBS

As a Fleetwood RV owner, you're invited to become a member of several Fleetwood RV motor home clubs. Becoming a club member is the perfect way to meet other Fleetwood owners who love to travel across America and share in the RV lifestyle. Visit our website at [www.fleetwoodrv.com/owners\\_clubs](http://www.fleetwoodrv.com/owners_clubs) to learn more and join the fun.



**YOUR LOCAL FLEETWOOD RV DEALER IS:**