

TUSCANY[®]

BY THOR MOTOR COACH



 **THOR**[®]
MOTOR COACH

Made to fit.

When we say
Made to Fit
we mean it.

With so many unique models available, Thor Motor Coach motorhomes are priced to fit anyone's budget – from families buying their first motorhome to full-timers looking for a roaming "dream home".

No matter how you choose to spend your time or your money, there's a TMC motorhome that fits your needs.

Welcome to the **Tuscany**, the motorhome that is *Made to Fit* your lifestyle.



See what's new on the
Tuscany for 2017.



42GX | VERONA | PACIFIC CHERRY | LIVING ROOM FEATURES PRIMERA™ BY ULTRAFABRICS® FURNITURE

Relax & Unwind

Thanks to a bed that was inspired by your own, **Tuscany** bedrooms boast a Denver Mattress® and elegant design.

You can also find plenty of areas to relax, unwind and get a good night's rest for the next day's adventures.



42GX | VERONA | PACIFIC CHERRY | MASTER BEDROOM EN-SUITE BATHROOM



42GX | RECLINING THEATER SEATING



42GX | RETRACTABLE 55" LED SMART HDTV



42GX | ELECTRIC FIREPLACE



42GX | VERONA | PACIFIC CHERRY | DENVER MATTRESS* KING SIZE BED WITH USB CHARGING STATION IN NIGHTSTANDS



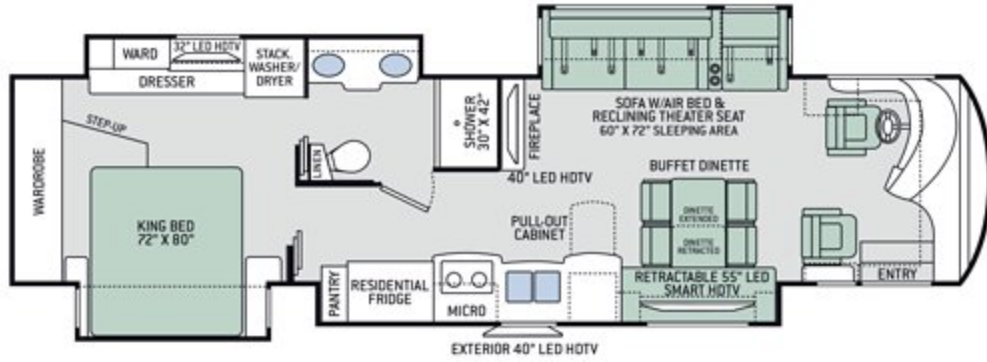
38SQ | GOLD COAST | RESORT CHERRY | BEDROOM FEATURES DENVER MATTRESS® KING SIZE BED



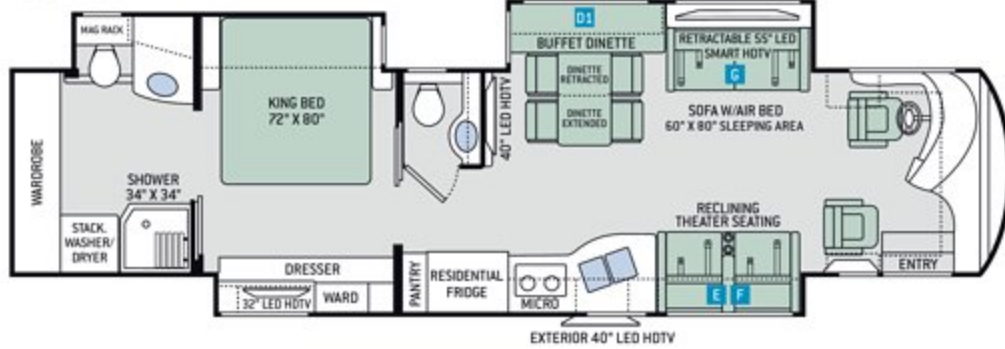
38SQ | GOLD COAST | RESORT CHERRY | LIVING ROOM FEATURES PRIMERA™ BY ULTRAFABRICS® FURNITURE

Floor Plans

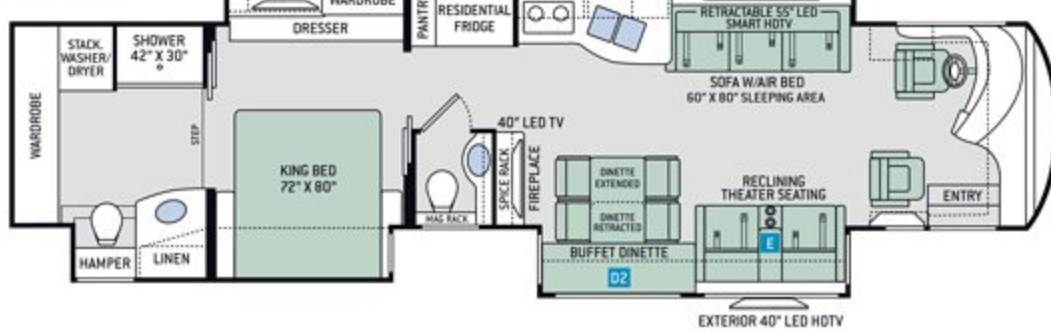
38SQ



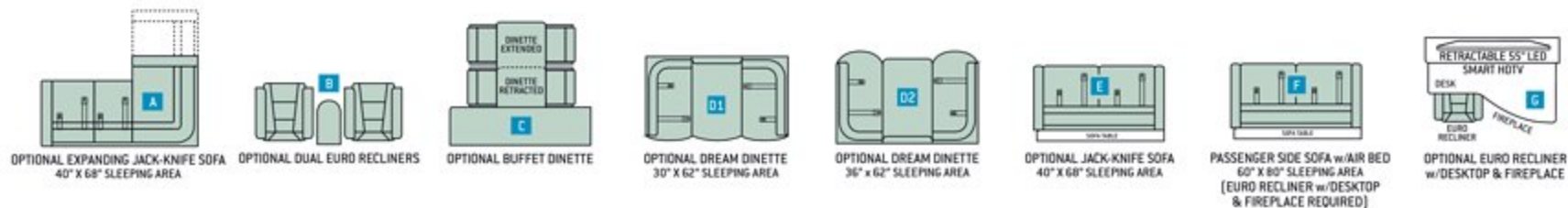
40DX



42GX



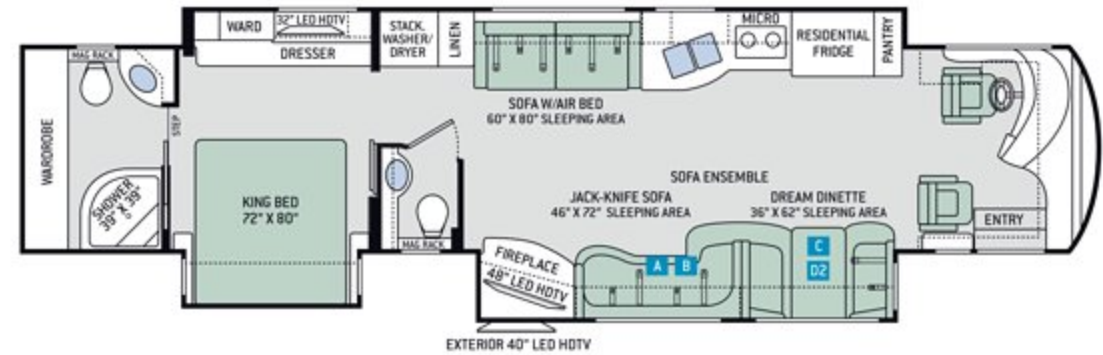
OPTIONS



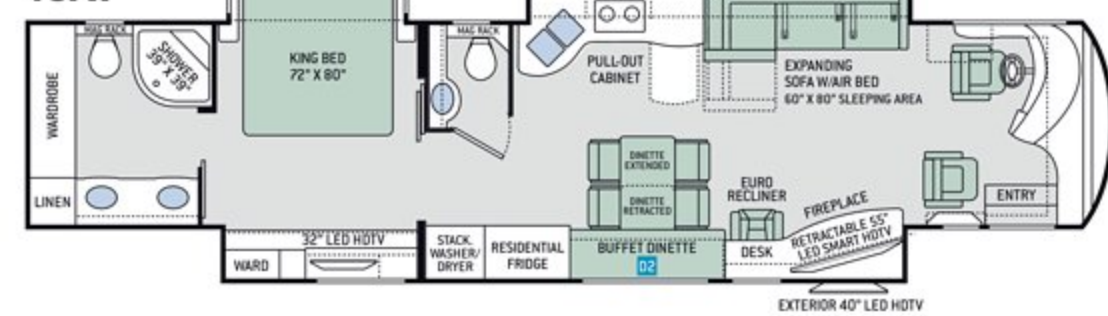
Specifications

	38SQ	40DX	42GX	44MT	45AT
Chassis	Freightliner XC-R	Freightliner XC-R	Freightliner XC-R	Freightliner XC-R	Freightliner XC-R
Gross Vehicle (GVWR)	38,600	38,600	45,660	45,660	45,660
Gross Combined (GCWR)	48,600	48,600	60,660	60,660	60,660
Wheel Base	252"	266"	266"	287"	287"
Exterior Length	39'-11"	41'-1"	43'-1"	44'-10"	44'-10"
Exterior Height (w/AC)	12'-9"	12'-9"	12'-9"	12'-9"	12'-9"
Exterior Width (w/o mirrors)	101"	101"	101"	101"	101"
Interior Height (living area)	84"	84"	84"	84"	84"
Awning Size	16'-5"	16'-5"	12' & 12'	16'-5"	16'-5"
Fuel (gal)	150	150	150	150	150
Fresh/Waste/Gray Water (gal)	91 / 51 / 51	91 / 51 / 51	91 / 51 / 51	91 / 51 / 51	91 / 51 / 51
Water Heater (gal)	On Demand	On Demand	On Demand	On Demand	On Demand
Furnace (BTUs)	65,000	65,000	65,000	65,000	65,000
Exterior Storage Capacity (cu. ft.)	190	215	215	260	260

44MT



45AT



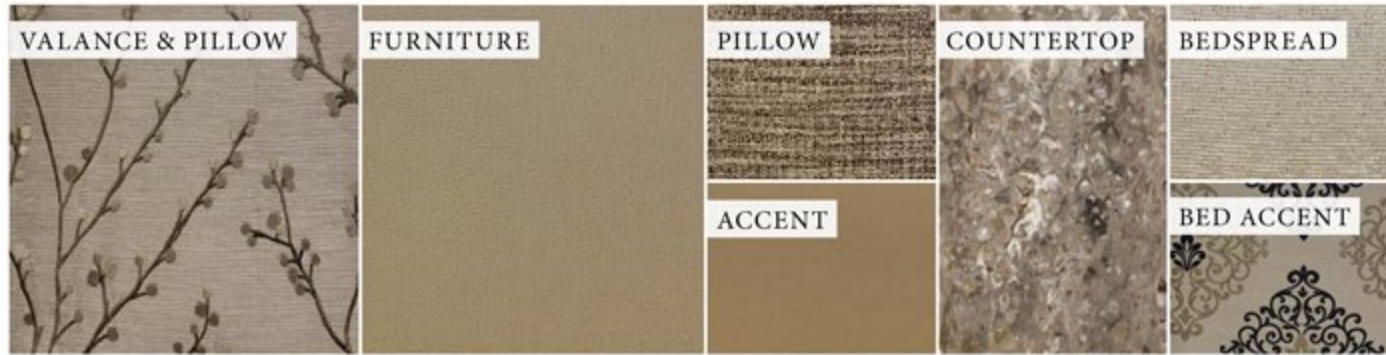
Interior Decor



BLACK DIAMOND



GOLD COAST



MOONSTONE



HIGH-GLOSS GLAZED MILAN CHERRY



HIGH-GLOSS GLAZED PACIFIC CHERRY



HIGH-GLOSS GLAZED RESORT CHERRY



POLISHED PORCELAIN TILE FLOORING

Exterior Graphics



MOSAIC FULL-BODY PAINT



OASIS FULL-BODY PAINT



REFLECTION FULL-BODY PAINT



SERENITY FULL-BODY PAINT



SOLSTICE FULL-BODY PAINT

Meals *Your Way*, While You're Away

Whether you're preparing a home cooked meal or storing leftovers from that great local restaurant, the well-equipped kitchen will keep you happy and healthy. The **Tuscany** features an electric induction cooktop, convection microwave oven, and plenty of working space on the solid surface countertops.



38SQ | GOLD COAST | RESORT CHERRY
KITCHEN INCLUDES STAINLESS STEEL APPLIANCES



42GX | VERONA | PACIFIC CHERRY | BUFFET DINETTE



Have Questions?
Contact our Coach Link Team.



42GX | VERONA | PACIFIC CHERRY | KITCHEN INCLUDES SOLID SURFACE COUNTERTOPS



ATLASTM

FOUNDATION

Laying the Groundwork for Safe Travels

The Atlas FoundationTM is the premier building platform and substructure in the industry. Thor Motor Coach has partnered with industry leaders, Freightliner[®] Custom Chassis and MORryde[®] International, to bring you this innovative building design.

Innovation doesn't just happen, it takes a dedicated team of the very best designers and engineers working together to tackle the challenges in the road ahead. From the very start our main focus is you, and you will see that from the moment you step into the motorhome.

The Atlas FoundationTM is a fully integrated basement foundation design. This means that trusses, cross members and ladder assemblies are pre-formed and laser-cut from high-strength, 50 grade HSLA steel, which provides greater resistance to corrosion than carbon steel.

The structure is assembled and welded on a flat, laser-leveled table, then hoisted onto the OEM chassis and welded into place. This system includes a built-in, unit floor leveling system, which

maintains the true squareness of the motorhome body and helps prevent crowning.

Fiberglass lined, pass-through storage bays span the width of the unit with steel support under each of the compartments. The steel sub-frame can support more than 1,000 pounds per compartment. Designed to facilitate greater luminosity, the interior mold and mildew resistant fiberglass lining is white, making it easier to see within the compartment in low-light situations.

Built strong and insulated to help reduce heat transfer, the firewall and rear engine cage are fully encased in steel, which eliminates engine and road noise.

You're the one who will rely on our innovation for years to come. You're the one who will feel the strength of the Atlas FoundationTM as you drive the open road. You're the one who will benefit from our hard work and commitment to excellence.

We didn't just design the Atlas FoundationTM, we crafted it to fit you.



Check out the in-depth video of the Atlas Foundation™.

A home needs a strong foundation and that is especially true for the home that rolls down the road. The Atlas™ Foundation under the Venetian provides an excellent base to construct your new motorhome.



A steel cage surrounds and protects the engine and radiator compartments.

Steel trusses provide consistent support across the entire structure of the floor. The steel is welded in place creating individual compartments which provide ample and pass-through basement storage.

Anti-camber bars are located in parallel with the main frame rails. These steel members eliminate the natural camber of the chassis created by the engine and transmission being located aft of the rear axle. The bars support the overall basement, creating a true structure to mount the house of the motorhome.

The steel firewall protects the front of the coach while providing a strong anchor point for the cockpit. Solid foam insulation is added to provide a buffer to eliminate road noise and help prevent heat and cold transfer.



Features

CONSTRUCTION & EXTERIOR

- Freightliner® XC-R Raised Rail Chassis
- Cummins® ISL 8.9L Engine with 450HP & 1,250 lb.-ft. Torque
- 6-Speed Allison MH-3000 Automatic Transmission
- ZF® Independent Front Suspension with 60° Wheel Cut
- Full Air Front Disc & Rear Drum Anti-Lock Brakes
- 2-Stage Jacobs® Brake (42GX, 44MT & 45AT)
- Sachs® Shock Absorbers
- Exhaust Brake (38SQ & 40DX)
- 150-gallon Fuel Tank with Dual Fills
- One-Piece Fiberglass Front & Rear Caps
- Domed Fiberglass Roof
- Invisible Front Paint Protection
- Full-Body Paint Package with Gel-Coat Sidewalls
- Automatic Leveling Jacks with Touchpad Controls
- Side-Hinged Locking Compartment Doors with Electronic Locks
- Basement Pass-Through Storage
- Easy Slide Storage Tray
- Power Entry & Patio Awnings with Integrated LED Lighting
- 2nd Power Patio Awning (42GX)
- Slideout Room Topper Awnings with Aluminum Covers
- Frameless Dual Pane Windows
- Roof Ladder
- Two (2) Patio Lights
- 10,000-lb. Trailer Hitch with 7-pin Round Connector (38SQ & 40DX)
- 15,000-lb. Trailer Hitch with 7-pin Round Connector (42GX, 44MT & 45AT)

AUTOMOTIVE & COCKPIT

- 10" Touchscreen AM/FM Dash Radio with Bluetooth®, Rand McNally® RV GPS Navigation, CD/DVD Player & Back-Up Monitor
- Chrome Heated/Power Mirrors w/Integrated Side Cameras
- Push Button Start

- Primera™ by Ultrafabrics® Reclining/Swivel Power Adjustable Captain's Chairs (Passenger Seat has Electric Footrest)
- Driver & Passenger Overhead Storage Cabinetry
- VIP Tilt/Telescoping Smart Wheel
- Adjustable Brake & Accelerator Pedals
- Cruise Control
- Emergency Engine Start Switch
- Air Horns
- Fog Lights
- Power Solar & Privacy Shades on Windshield
- Manual Solar & Privacy Shades on Side Windows
- Electric Step Cover
- 295/80R 22.5" Michelin® Radial Tires with Aluminum Wheels
- Keyless Entry System & Compartment Door Locks

INTERIOR

- Polished Porcelain Tile Throughout
- Ceiling Ducted Whisper Air™ Central Cooling System
- LED Lighting
- Decorative Ceiling Treatment with Mood Lighting
- High-Gloss Glazed Cabinetry with Solid Wood Raised Panel Cabinet Doors & Nickel Finish Hardware
- Window Solar & Privacy Shades
- Electric Fireplace with Remote Control (38SQ, 42GX, 44MT)
- Primera™ by Ultrafabrics® Furniture
- Sofa & Reclining Theater Seat with Footrest (38SQ)
- Driver Side Sofa with Air Bed (40DX, 42GX & 44MT)
- Reclining Theater Seating with Footrests (40DX & 42GX)
- Ensemble with Jack-Knife Sofa & Dream Dinette® Booth (44MT)
- Expanding Sofa with Air Bed (45AT)
- Euro Recliner, Desktop & Electric Fireplace with Remote Control (45AT)
- Buffet Dinette with Four (4) Chairs – Includes Two (2) Folding (38SQ, 40DX, 42GX & 45AT)

INTERIOR OPTIONS

- Euro Recliner, Desktop & Electric Fireplace with Remote Control (40DX)
- Passenger Side Sofa w/Air Bed – Euro Recliner, Desktop & Electric Fireplace Option Required (40DX)
- Jack-Knife Sofa (40DX & 42GX)
- Expanding Jack-Knife Sofa (44MT)
- Dual Euro Recliners with End Table (44MT)
- Buffet Dinette with Four (4) Chairs – Includes Two (2) Folding (44MT)
- Dream Dinette® Booth (40DX, 42GX, 44MT & 45AT)

KITCHEN

- 20 cu. ft. Stainless Steel Residential French Door Refrigerator with In-Door Ice & Water Dispenser
- Electric Induction Cooktop
- 1.9 cu. ft. Stainless Steel Over-the-Range Convection Microwave Oven
- Residential Dishwasher Drawer-Style
- Chrome Pull-Out Wire Basket (44MT & 45AT)
- Solid Surface Countertops & Sink Covers
- Large Double Bowl Stainless Steel Sink & Single Handle Faucet w/Pull-Down Sprayer
- Decorative Tile Backsplash
- 12-volt Attic Fan with Cover & Remote Control

BEDROOM & BATHROOM

- Denver Mattress® Pillowtop King Size Bed
- Bedspread with Throw Pillows
- Ceiling Fan in Bedroom
- USB Charging Ports in Nightstands
- Porcelain Toilet
- Oversized Full Height Shower with Glass Door
- Decorative Tile Backsplash (38SQ & 45AT)
- 12-volt Attic Fan with Cover in Bathroom

ENTERTAINMENT

- 40" LED HDTV & Retractable 55" LED Smart HDTV in Living Area (38SQ, 40DX & 42GX)
- 48" LED Smart HDTV in Living Area (44MT)

- Retractable 55" LED Smart HDTV in Living Area (45AT)
- JBL® Sound Bar with Bluetooth®
- Sony® Blu-Ray DVD Player in Living Area & Bedroom
- 32" LED HDTV in Bedroom
- Exterior 40" LED HDTV & Sound Bar with Bluetooth
- Cable TV & HDMI Video Ready
- Winegard™ TRAV'LER HD Satellite Dish (HD-capable with DirecTV in US. Shaw Direct in Canada)

ENTERTAINMENT OPTIONS

- 32" LED HDTV in Cockpit Overhead (38SQ, 44MT & 45AT)

ELECTRICAL & PLUMBING

- Cummins Onan® RV QD 10000 Diesel Generator on Power Slideout
- Automatic Generator Start
- 50-amp Shoreline Power Cord & 12-volt Retractable Cord Reel
- 2000-watt Pure Sine Inverter/100-amp Converter
- Triple 15,000 BTU Low-Profile Ducted Air Conditioners with Three (3) Heat Pumps
- AC Condensation Drainage System
- Energy Management System
- Multiplex Wiring Control System
- Pre-Wired for Solar Charging
- Four (4) Auxiliary House Batteries
- Battery Disconnect Switch
- Exterior GFCI Recept
- Enclosed & Heated Holding Tanks
- E-Z Flow Water Panel with Whole-House Water Filtration
- Black Tank Flush System
- Outside Shower
- Stackable Washer & Dryer
- Central Vacuum System with Toe-Kick Dustpan
- Aqua-Hot® 400D Hydronic Furnace & Water Heating System



IMPORTANT-PLEASE READ: This brochure reflects product design, fabrication, material, components and specifications at the date of printing, which date is disclosed below. Please visit us online at ThorMotorCoach.com or consult with your selling dealership for the latest in standards, options, specification and technical information. Photographs in the brochure may depict optional equipment or may only be available in certain floor plans. Components, appliances and the chassis may have been manufactured in a calendar year before the vehicle's designated model year. All capacities are approximate. The actual length of the vehicle may differ from that indicated in the brochure due to variances in the manufacturing processes and/or installed components. All dry weights are based on standard model features and do not include optional features or equipment. Component part and appliance manufacturers issue limited warranties covering portions of the vehicle not covered under the limited warranty we issue. Copyright Thor Motor Coach, Inc. © OH 11/29/16

YOUR LOCAL THOR MOTOR COACH DEALER



Made to fit.

thormotorcoach.com/tuscany/tag

P.O. Box 1486, Elkhart, IN 46515 Sales Department: 800.860.5658 Customer Service: 877.855.2867