



15



CROSSROADS[®]
RECREATIONAL VEHICLES



Lincoln front living room with panoramic windshield in the Dune decor.

RUSHMORE LUXURY

Rushmore is as elegant and prestigious inside as it is out. This modern fifth wheel was developed with you in mind. Equipped with all the features, options and amenities you could wish for in any RV. Rushmore lets you choose the exact interior to fit your lifestyle, with rich dark maple cabinets and three designer inspired interior decor choices. For Maximum entertainment, the large 48" LED HD TV with sound bar is your private home theater. The joy of an RV is that no matter where you go, you are always at home. And at the end of the day, that means happily home in your own bed. The Rushmore tucks you comfortably in a I-Cool Memory Foam queen mattress. You'll appreciate other four-star touches, too, like the large wardrobes with plenty of drawer space and a 32" LED HD TV.



Franklin "Master Suite"



Lincoln with pull-out buffet



Franklin "Master Suite" with opposing slides and panoramic windshield

BEST CONSTRUCTION

FALCON INTEGRATED TECHNOLOGY (F.I.T.) MAKES EVERYTHING EASIER. ONE SINGLE POINT OF CONTACT MAKES IT EASIER FOR OWNERS TO UNDERSTAND AND EASIER FOR SERVICING DEALERS TO GET ANSWERS AND SOLUTIONS.

FLOOR

1. Residential Stain Guard Carpet
2. Residential Carpet Pad
3. Vinyl Flooring
4. 5/8" Tongue & Groove Plywood Floor
5. 3" Welded Aluminum Framing
11" on Center
6. 1 Layer Flex Foil Insulation.
7. 2 Layers Batten Insulation
8. Darco Moisture Barrier
9. F.I.T. Frame
10. 1 Layer Flex Foil Insulation
11. 1 Piece Corrugated Underbelly

BATH DECK

12. 5/8" Tongue & Groove Plywood
13. 3" Aluminum Frame
14. Flex Foil & Batten Insulation
15. Finished and Insulated Pass-Thru Ceiling

ROOF

16. Alpha Ply II Roofing
17. 3/8" Plywood Decking
18. 1 Layer Flex Foil Insulation
19. Stamped Steel Roof Trusses
20. 2 Layers Batten Insulation
21. Interior Ceiling Board
22. Main 15,000 BTU A/C Located in Rear
23. Optional 2nd 15,000 BTU A/C
Located Mid Ship Optional
Heat Pumps on One or Both A/Cs

SIDEWALLS

24. High Gloss Gel Coat Exterior
25. 2" Welded Aluminum Frame
26. Sanded Block Foam
27. EGS Steel Backers for Cabinets
28. Interior Wall Board
29. Frameless Windows,
Optional Dual Pane

FRONT CAP

30. 2 Layers Batten Insulation
31. 1 Vertical Layer of Flex Foil
32. Aerodynamic Fiberglass
Front Cap

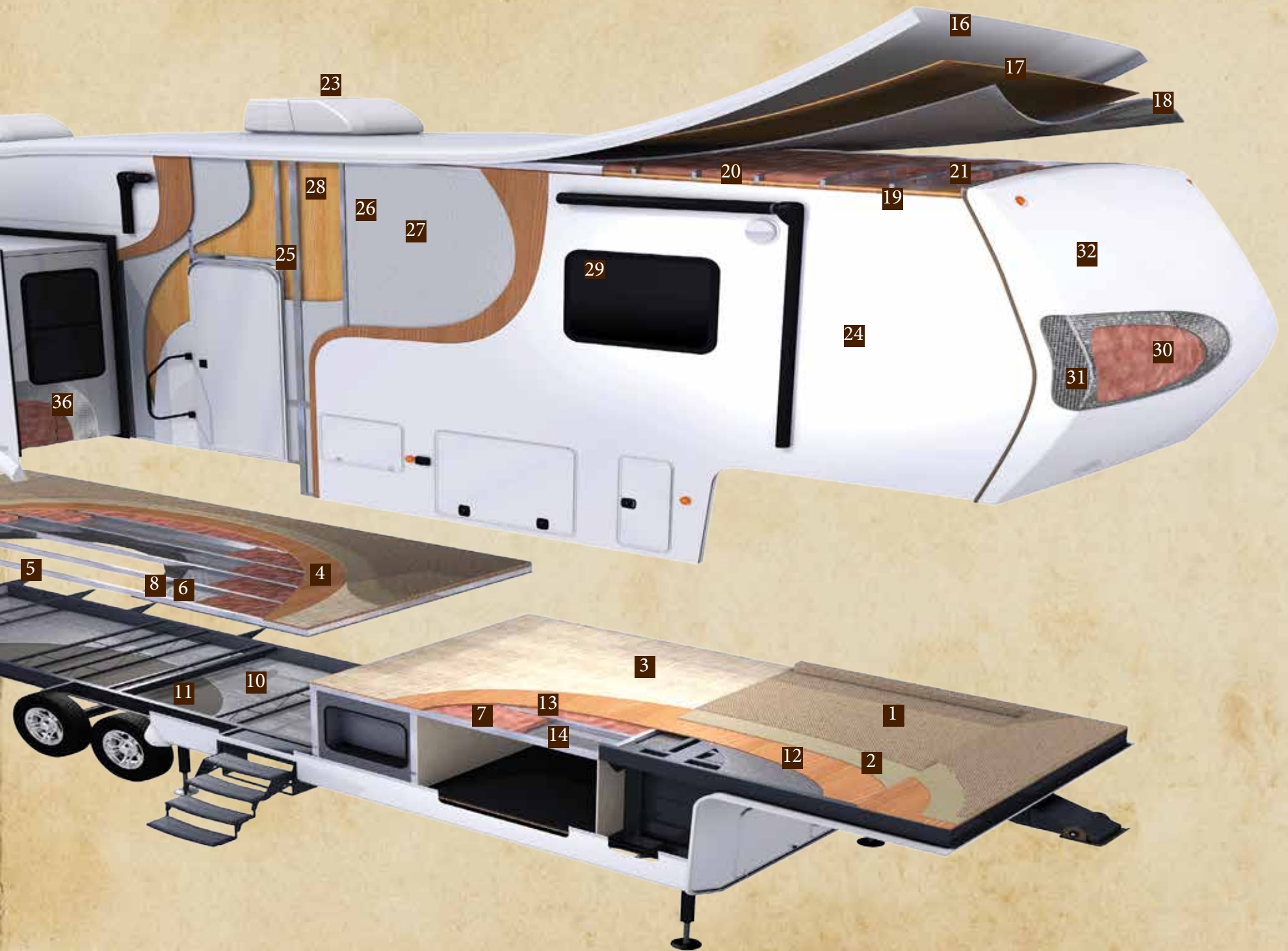
REAR CAP

33. 2 Layers Batten Insulation
34. 1 Vertical Layer of Flex Foil

SLIDE-OUT

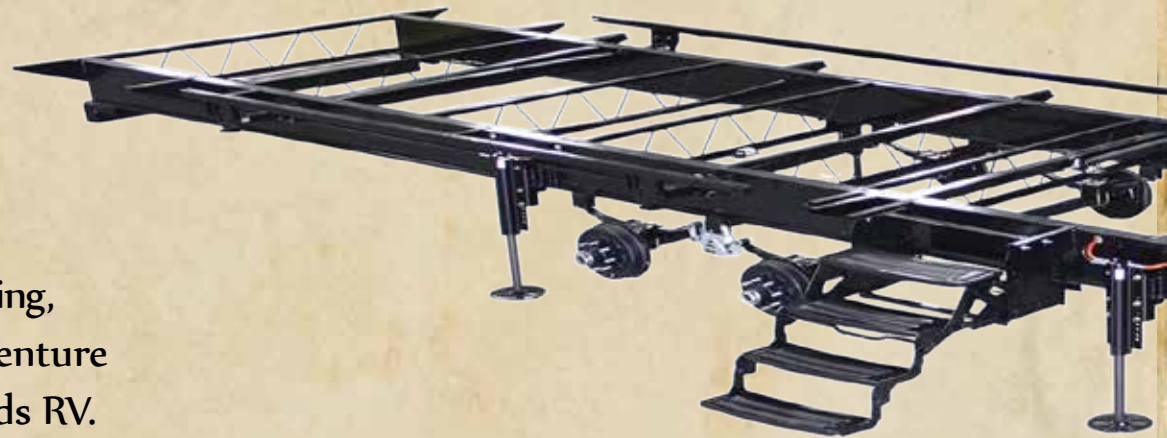
35. Laminated Outside Wall
36. Sidewalls - 1 Layer Batten,
1 Layer Flex Foil
37. Roof - 1 Layer Batten,
1 Layer Flex Foil
38. 1" Laminated Floor





WE START WITH A FIT FOUNDATION

Falcon Integrated Technology (F.I.T.) makes everything easier. One single point of contact makes it easier for owners to understand and easier for servicing dealers to get answers and solutions. Competitors use a patchwork of supplies for thier coach's foundation (see chart on next page) making troubleshooting, well, troublesome! Simplify your next RV adventure with a cuatom FIT foundation from CrossRoads RV.



STANDARD PIN BOX DESIGN

FIT foundations come standard with the Trail Air Rota-Flex pivoting head pin boxes. Rota-Flex utilizes a rubberized compound which absorbs fore to aft motion, a.k.a. "chucking," between the tow vehicle and Fifth Wheel to give you an overall improved ride.



OPTIONAL AIR RIDE HITCH

Optional Trail Air Tri-glide Pin Box is the first air spring system to both reduce checking and control vertical push/pull movement. When the coach is in neutral position, the lower jaw always sits at its lowest point. As the hitch encounters road vibrations, the system lifts the coach.



STANDARD SIX POINT SYSTEM

No more boards or blocks to get your coach level. Every coach comes with Falcon Level Up System.



FALCON BRAND QUADSTEPS

THE Falcon Quad Radius Step is simply a better step. More logically laid out than its competitor's, the Falcon radius step stores easier and is easier to use.



OPTIONAL HITCH RECEIVER

F.I.T.'s ingegrated hitch receiver can haul 3,000 pounds of additional cargo (250 lb. tongue capacity).

COMPARE THE OTHERS

Product	Rushmore	Competitor A	Competitor B	Competitor C
Frame	Falcon	In House	LCI	LCI
Pin Box	Falcon	Mor-Ryde	Mor-Ryde	LCI
Axles	Falcon	Alko	Dexter	Dexter
Suspension	Falcon	Dexter	Mor-Ryde	Dexter
Auto-Leveling	Falcon	Bigfoot	None	None
Steps	Falcon	Hickory Springs	LCI	Hickory Springs
Slide-Outs	Falcon	RBW	LCI	LCI



FALCON BRAND AXLES

Falcon 7,000 pound capacity axles are built to last and offer many advantages over the competition:

*Self Adjusting Brakes improve stopping time up to 50% and lower maintenance costs.

*Powder-coated axle tubes protect against corrosion.

*Zinc plated mounting hardware prevents against rusting and corrosion improving service jobs.

*Waterproof 3M connectors in all brake wiring prevents corrosion at connection point.

*Integrated spindle/brake flange provides precision brake mounting and maximizes performance.

FALCON BRAND SUSPENSION

Your suspension should absorb road shock, not transfer it! This is why all F.I.T. foundations are equipped standard with the Falcon-Flex rubberized suspension system. It provides owners a much smoother ride by virtually eliminating vibrations caused by road bumps.

FALCON HYDRAULIC SLIDE-OUT SYSTEM

The standard for hydraulic slide-out systems, Falcon provides years of worry free operation and makes us distinct amongst the competition.

THE FALCON FRAME (ABOVE)

Every Falcon Frame utilizes the very best quality materials available.

*Powdercoated frame for protection.

*Heavy duty 12" I-Beam main rails.

*Drop section of chassis is 10" I-Beam.

RUSHMORE MODELS

You'll discover simple, yet obvious detailing in the way each Rushmore is thoughtfully designed. Beginning with the unshoppable bedroom with opposing slides giving you the largest bedroom in the industry. Other features include huge walk in showers, full 7 drawer pantry's, large LED TV sizes in both the living room and bedroom.

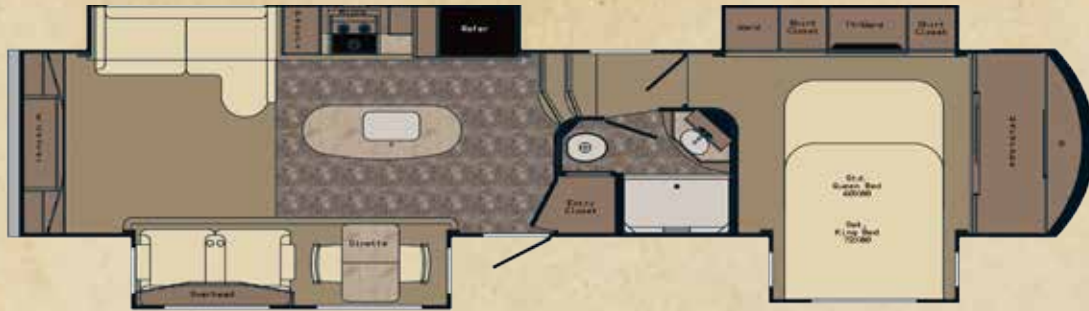


WASHINGTON



LINCOLN

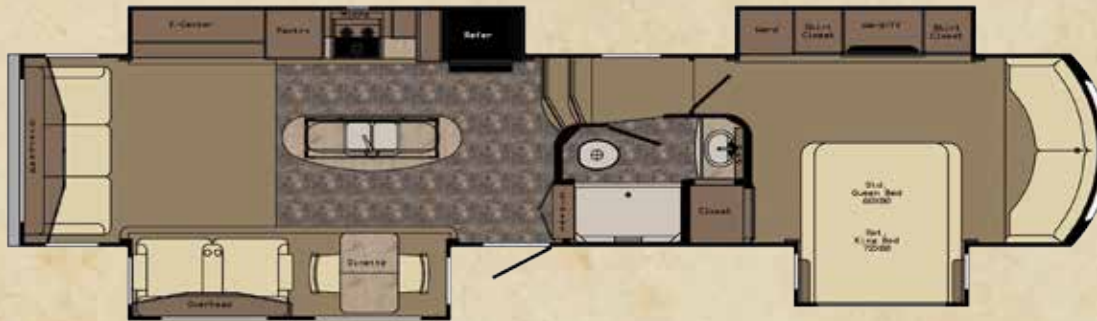
RUSHMORE	WASHINGTON	LINCOLN	JEFFERSON	FRANKLIN	SPRINGFIELD
SHIPPING WEIGHT	12924	13308	12902	13032	11772
GVWR	16500	16500	16500	16500	16500
CARRYING CAP	3576	3192	3598	3468	4728
HITCH WEIGHT	2892	2846	2804	2926	2110
AXLE WEIGHT	10032	10462	10098	10106	9662
EXT LENGTH (Cap to Ladder)	41'	42' 4"	41'	41' 3"	36' 6"
EXT. HEIGHT W/AC	13' 2"	13' 2"	13' 2"	13' 2"	13' 2"
FRESH WATER	104	104	104	104	104
BLACK WATER	42	42	42	42	42
GRAY	87	84	87	87	87
TIRE SIZE	LT235/85R16E	LT235/85R16E	LT235/85R16E	LT235/85R16E	LT235/85R16E



JEFFERSON



DUNE



FRANKLIN



MIDNIGHT



SPRINGFIELD



TROPIC

DISCLAIMER: Product information is as accurate as possible at the date of publication of this brochure. All features, floorplans, and specification in this brochure are subject to change without notice. Please also consult CrossRoads RV's website at www.crossroadsrv.com for more current product information and specifications. Tow Vehicle Disclaimer. CAUTION: Owners of CrossRoads recreational vehicles are solely responsible for the selection and proper use of tow vehicles. All customers should consult with a motor vehicle manufacturer or their dealer concerning the purchase and use of suitable tow vehicles for CrossRoads RV products. CrossRoads RV disclaims any liability or damages suffered as a result of the selection, operation, use or misuse of tow vehicle. CROSSROADS RV'S LIMITED WARRANTY DOES NOT COVER DAMAGE TO THE RECREATIONAL VEHICLE OR TOW VEHICLE AS A RESULT OF THE SELECTION, OPERATION, USE OR MISUSE OF THE TOW VEHICLE.

STANDARDS

CABINERY:

- * Soft Maple Hardwood Cabinets
- * Stiles Pre-Drilled & Screwed together
- * Full Extension Ball Bearing Drawer Glides
- * Hidden Hinges

FRONT & REAR CAP DESIGN:

- * Aerodynamic Profile
- * Short Bed & Extended Cab Trucks
- * Increased Turning Radius
- * LED Hitch pin Light for Easy Hookup

EXTERNAL DOCKING STATION:

- * Exterior Hot/Cold Shower
- * City Water Hook up
- * Black Tank Flush System
- * Cable TV & Satellite Hook-ups
- * All Tank pull handles
- * Winterization Valve
- * 110V outlet
- * Water pump - on/off switch

EXTERNAL STORAGE:

- * Slam Latch baggage doors w/ magnetic catches
- * (3) 12v lights
- * Tough ply floor covering
- * Fully Finished & Insulated Pass Through Storage
- * Additional Utility Storage Compartment

FLOOR CONSTRUCTION:

- * 5/8" Tongue & Groove Plywood
- * 3" Aluminum Framing - 11" on center
- * Seamless Residential Heat Ducts
- * Enclosed & Heated Water Lines

WALL CONSTRUCTION:

- * 2" Laminated Sidewall
- * Double Welded Aluminum Frame Construction
- * High Gloss gel coat fiberglass exterior
- * EGS Steel Backers for Cabinets

ROOF CONSTRUCTION:

- * 5" Stamped Steel Galvanized roof trusses
- * Double Truss at each A/C
- * 16" on Center
- * 3/8" Plywood Roof Decking
- * Full Walk-on Roof
- * 5" Radius Metal Roof Cap
- * 2 Attic Vents
- * One Piece Alpha Ply II Roof Material

WINDOWS:

- * Flush Mount Frameless Exterior Windows
- * 80% Deep Dark Tint
- * 100% UV Protectant

F.I.T. SYSTEM (falcon intergrated technology):

- * Falcon Roto-Flex Pin Box
- * Falcon Hydraulic Slide-Out
- * Falcon 12" I-Beam Frame w/ 10" I-Beam Drop
- * Falcon 2" Receiver Hitch (Opt)
- * Falcon 7,000lb Axles
- * Falcon Suspension System w/ Grease Zerks
- * Falcon 6pt. Hydraulic Leveling w/ 1 touch Leveling
- * Falcon Quad Entry Step

TIRES:

- * 16" E-Range Tires
- * 8 Lug Aluminum Rims
- * 2" Self Adjusting Brakes
- * 16" E-Range Spare Tire

INSULATION/UNDERBELLY:

- * Fully Enclosed & Heated Underbelly
- * R-21 Bed/Bath Floor
- * R-42 Main Living Room Floor
- * R-38 Roof
- * R-21 Front/Rear Caps
- * R-14 Slideout End Walls
- * R-11 Sidewalls
- * Color Coded Flex Pex Water Lines
- * Aluminum Wrapped Ducts w/ Foam Core

TANKS/LP GAS SYSTEM:

- * (2) 30lb LP Bottles w/ Auto Change over
- * 104 Gallon Fresh Water
- * 90 Gallon Grey Water
- * 45 Gallon Black Water

ENTRY CLOSET:

- * Coat & Boot Closet w/ Hooks
- * Rushmore Monitor Panel
- * Master Control Slides
- * Master Control Awning

POWER:

- * Progressive 90 Amp/12V DC Converter
- * 50 Amp Detachable Power Cord
- * Dual Battery Box
- * 110V Exterior Receptacle
- * Battery Disconnect Switch

HEAT & A/C:

- * Seamless One Piece in Floor Duct
- * 40,000 BTU Furnace
- * Heat & A/C Duct in Bathroom
- * 15,000 BTU A/C w/ Quiet Residential Returns

& OPTIONS

SLIDE ROOMS:

- * 6'-7" Slide Room Interior Height
- * Hydraulic Operation w/ Manual Override
- * Selector Valves for Slide Rooms
- * R-14 Slideout Floor Insulation
- * 1" Coated Plywood Slideout Floor

ENTERTAINMENT:

- * 48" LED HD TV in living
- * 32" LED HD TV in bedroom
- * Sound Bar for Surround Sound
- * Pre-Wired for Winegard Satellite Systems
- * (2) Marine Grade Exterior Speakers in Sidewalls
- * Exterior Stereo in pass through storage

APPLIANCES:

- * 18 cu. ft. Residential refer w/ 1000 watt Inverter
- * 3 Burner Flush Mount Stove w/ solid surface covers
- * 22" Deluxe Bakers Oven
- * 30 OTR Microwave w/ Exhaust Fan
- * 12 Gallon gas/electric DSI Water Heater

INTERIOR/LIGHTING:

- * 5" Round LED Ceiling Lights
- * 4" Round LED Accent Lights
- * Large Exterior Scare Light
- * Brushed Nickel Hardware on all Cabinets
- * Custom Solid Wood Slideout Fascia

KITCHEN:

- * 100% Acrylic 2-Tone Solid Surface LG Countertops
- * LG Solid Surface Sink & Stove Covers
- * Stainless Steel 50/50 Double Sink Basin
- * Residential Sized Storage Drawers
- * Pots & Pan Storage
- * Cookie Sheet Storage
- * 13 Gallon Trash Can
- * Large Residential pantry w/ coffee & toast station
- * High Rise Faucet w/Pull Out Spray Hose
- * Pendant Lights

DINING ROOM:

- * Adjustable dinette table w/ flip up extensions
- * (2) High Back Dinette Chairs
- * (2) Folding Dinette Chairs

LIVING ROOM:

- * 84" Residential Sleeper Sofa (converts to King Bed) (VBF)
- * Theater Seating w Center Console & 2 Drink Holders (VBF)
- * Solid Wood Slide Fascia
- * Roller Shades throughout

BEDROOM:

- * Exclusive Dual Opposing Bedroom Slides "Master Suites"
- * 60" x 80" I-Cool Memory foam Mattress
- * 32" LED HD TV in bedroom
- * Night Roller Shades in Bedroom
- * 2 Night Stands, Each w/ a 110V Electrical Outlet

CLOSET:

- * Spacious Walk in Wardrobe w/ Built in shelving

BATHROOM:

- * 1 Piece Fiberglass Shower
- * Tri-Fold Glass Shower Door
- * Porcelain Foot Flush Toilet
- * Large Mirrored Medicine Cabinet
- * Domed Skylight in Shower
- * Heat & A/C Duct in Bathroom
- * Large Linen Closet
- * Power Roof Vent
- * Adjustable Shower Head
- * Towel Hooks on bathroom Door
- * 100% Acrylic 2-Tone LG Solid Surface Countertops

LUXURY TOURING PACKAGE:

- *F.I.T. Chassis
- *Power Awning w/LED Light
- *15K BTU Quiet Cool A/C

- *48" LED HD TV w/ Sound bar in Living Room
- *32" LED HD TV in Bedroom
- *18 cu.ft. Residential Refer w/1000 watt Inverter
- *Exclusive Dual Opposing Slides in Master Suite
- *Recessed LED Lighting Throughout
- *Night Roller Shades
- *30lb LP Tanks
- *Washer, Dryer Prep
- *Black Water Tank Flush
- *"V" Design Steel Docking Station
- *Enclosed / Heater Holding Tanks
- *30" Over The Range Microwave
- *80% Tinted Frameless Windows
- *50 amp Service w/ 90 amp Converter
- *Exclusive I-Cool Memory Foam Mattress

OPTIONS:

- Dyson Cordless Vac
- King Bed (I-Cool Memory Foam)
- Convection Microwave
- 12 cu. ft. "RV" refer ipo residential
- Max Fan in Bedroom, Bathroom, Kitchen
- Ottoman (varies by model)
- Dual Pane Windows
- Slide-out Awning packages (3,4,5 slides)
- 2nd Power Awning w/ LED
- Generator Prep
- 5.5 Onan LP Marquis Gold (includes gen prep)
- 2nd 15,000 BTU A/C
- Trail-Air Tri-Glide pin box
- Heat Pump on A/C (ea.)
- Holding Tank Heater
- Max Linoleum in Living Room
- Outside E-Center (LN is std)
- Backup Camera
- 2" Receiver Hitch



BUY LOCAL

Where you purchase your recreational vehicle is ultimately your decision but CrossRoads urges you to consider buying at your local dealer. Dealers are part of your community, providing jobs and contributing to your local economy. These dealers are under obligation to provide warranty service for products they sell, but are not legally required to service products purchased from other dealers. You enjoy customer priority. Dealership generally service their purchasing customers first, others may experience long delays and miss opportunities to use their RV. What is it worth for you to have a dealership's full attention and motivation to satisfy you when you need service in a timely manner? Why not stay close to home?

CROSSROADS[®]
RECREATIONAL VEHICLES