

2015 AMERICAN REVOLUTION

2015
AMERICAN REVOLUTION®



American Coach®

DRIVING YOUR PASSION



DRIVING YOUR PASSION

INTEGRITY. REPUTATION. COMMITMENT.

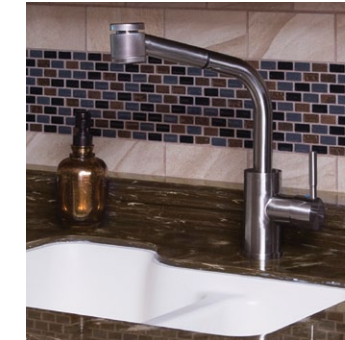
At American Coach® these are more than just words. They're the principles upon which we build every motorcoach, every day.



We believe that every luxury motorcoach owner deserves an extraordinary journey, which is why the American Coach story begins long before you step inside or get behind the wheel. It begins with innovative engineering, cutting-edge construction techniques and a meticulous attention to detail. But a beautiful, distinctive design is only the beginning. Through our expert service team and dedicated nationwide dealer network, we've earned an unsurpassed level of customer loyalty.

We're with you at every turn, every time, year after year. Your dreams are limitless, and so is our commitment to every American Coach owner. We're more than a luxury motorcoach manufacturer. We're a partner in the pursuit of your passion.

American REVOLUTION®



THE 2015 AMERICAN REVOLUTION

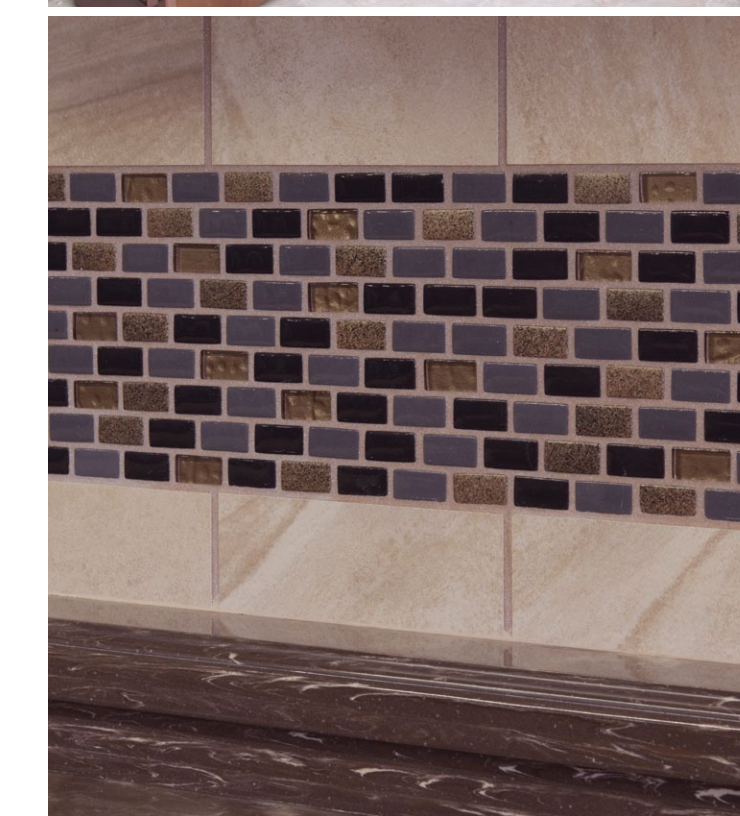
The 2015 American Revolution offers distinctive details that feed the spirit and evoke an irrepressible sense of adventure. The latest style, technology and premium features make every travel experience even more exciting. It's a sign of success that's hard to ignore, and an invigorating opportunity that's impossible to deny.

TOP FEATURES

- Cummins® 450HP ISL9 with Side Radiator
- Sony® LED TVs
- Villa® Ultraleather™ Furniture
- Aqua-Hot® Heating System
- Tecma® Silence Plus Porcelain Toilets
- Dual Dash Monitors
- Power Generator Slide
- Slide-out Mounted Girard Awning
- Power Roller Shades & Blinds Available
- Heated Tile Floor Available

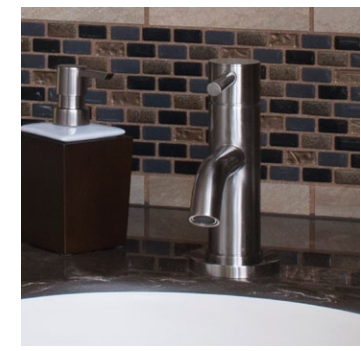


AMERICAN REVOLUTION 42G shown in Daybreak interior décor and Cinnabar wood cabinetry





RELAX.
YOU'RE TRAVELING
IN STYLE.



Inside the American Revolution, contemporary fabrics with lively patterns and color combinations enliven and inspire. From the moment you set foot inside, it's clear that no matter where you're going, you'll arrive in style.



EXTERIOR / INTERIOR DÉCOR

CASHMERE SAND



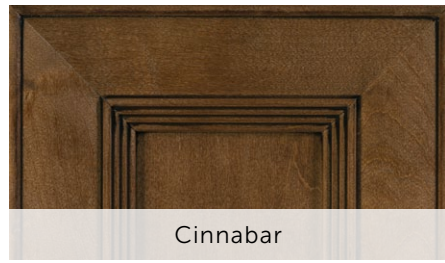
DAYBREAK



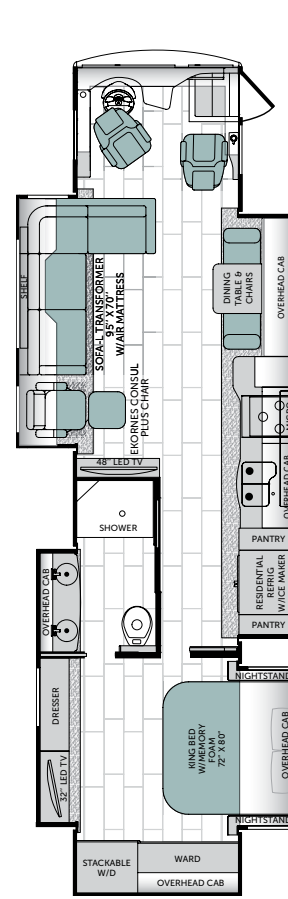
NIGHT SKY



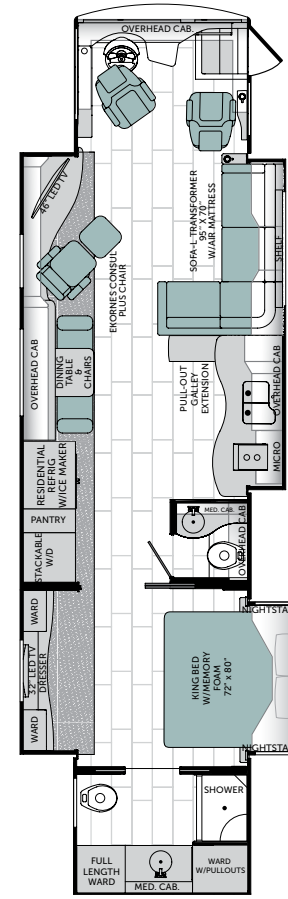
"Build Your Own" at AmericanCoach.com
or with the iPad® app.



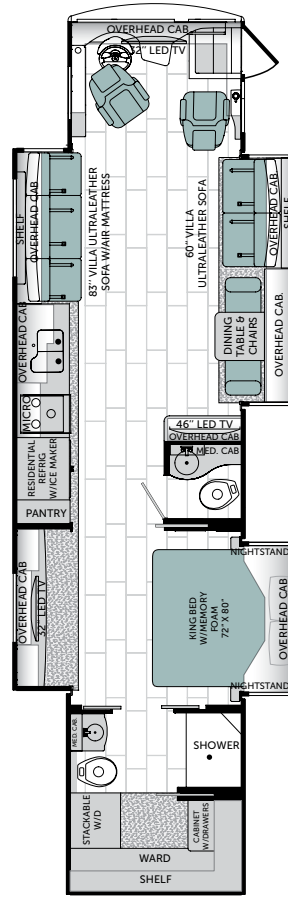
FLOOR PLANS



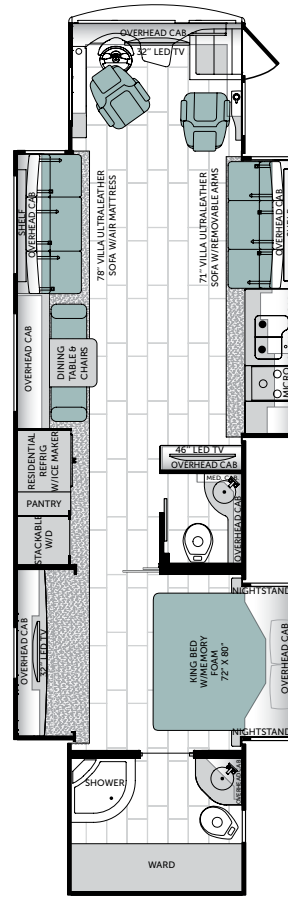
Available options: 091, 107, 126, 129, 139, 856



Available options: 087, 091, 107, 126, 129, 139, 856

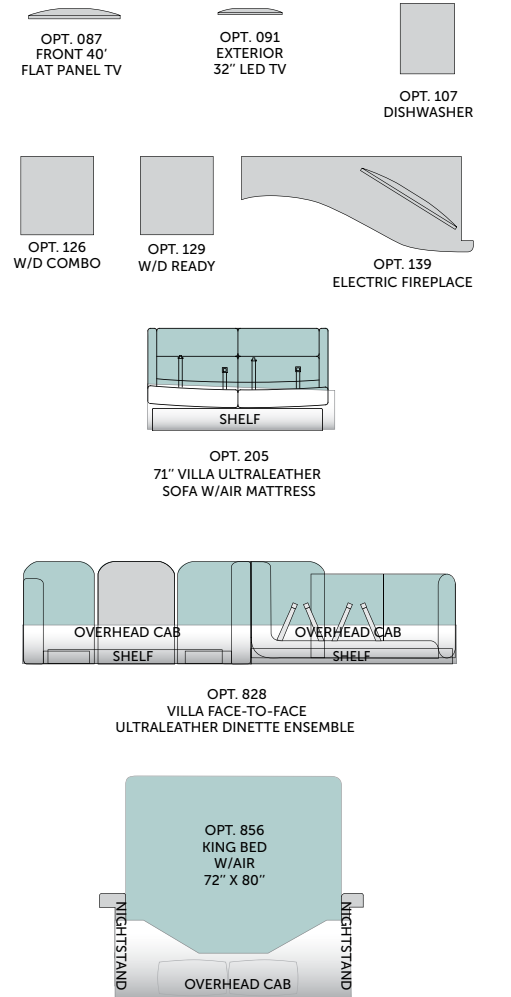


Available options: 091, 107, 126, 129, 828, 856



Available options: 091, 107, 126, 129, 205, 828, 856

OPTIONS



¹Interior décors and/or woods may be subject to change. Printed fabric samples are representations of actual fabrics and may be limited due to standard printing technology.

STANDARD & OPTIONAL FEATURES | INTERIOR



DRIVER CONVENIENCE

- Adjustable Brake & Throttle Pedals
- Auxiliary Fog Lights
- Auxiliary Start Switch
- Chrome, Heated Side-View Mirrors w/Remote Adjustment & Turn Signal Indicators, Integrated Side Vision Cameras
- Denso Dash Climate Control
- Driver & Passenger LED Reading Lights
- Dual-Dash Monitor Design
- I.C.C. Light Switch
- Keyless Entry Door Access w/Key Fob
- Multiple Auxiliary 12-Volt Dash Receptacles
- One-Piece Windshield Bonded to Steel
- Powered Windshield Privacy Blinds & Shades
- Tag Axle Dump Switch (42G, 42T, 42W)
- Soft-Touch Smart Steering Wheel
- Tilt Steering Wheel & Gauge Cluster Pod
- Top-Mounted Intermittent Windshield Wiper System w/Wet Arm
- Villa® 6-Way Power Driver Seat w/Heat, Manual Lumbar & Adjustable Arms (Ultraleather™)
- Villa 6-Way Power Passenger Seat, Manual Lumbar, Adjustable Arms & Electric Footrest (Ultraleather)
- Soft-Touch Two-Tone Dash w/Burlwood Trim

Electronics

- Color Camera Monitor w/One-Way Audio
- Sony Rear-View Camera
- Xite® Touch Screen Dash Radio w/GPS Navigation & Sirius® Satellite Radio (Subscription Required)



GENERAL AMENITIES

- 30" Deep Slide-Outs (39A, 42T, 42W)
- Coffered Ceilings w/Crown Molding
- Hardwood & Fabric Window Treatments
- Fan-Tastic® Rain Sensor Power Roof Vents w/3-Speed Fan
- Flush Bolt Latch Hardware on Pocket Doors
- Lined Cabinet Interiors
- Premium Hardwood Cabinet Doors
- Premium Hardwood Face-Framed Cabinetry & Moldings
- Polished Porcelain Tile Floor
- 12V LED Ceiling & Task Lighting
- Solid-Surface Entry-Step w/LED Accent Lights & Power Cover
- Pop-Up Outlet at Dinette Countertop w/USB Outlets

Optional

- Canadian Standards Build
- Custom Interior Request
- Factory V.I.P. Delivery

LIVING AREA

- Central Vacuum System
- Centralized Command Center
- Day/Night Manual Roller Shades
- Large Passenger Window
- Raised-Panel Cabinet Doors
- Dimmable Ceiling Lights
- Sony 46" LED HDTV (Mid-Ship)
- Sony 48" LED HDTV (Mid-Ship 39A)
- Winegard In-Motion Satellite System
- Electric Fireplace (39A, 42G)

Electronics

- Sony® Blu-ray® Home Entertainment System w/Wi-Fi
- Sony 32" LED HDTV (Front 39A, 42T, 42W)



GALLEY

- Adjustable Shelves
- High-Rise Galley Faucet w/Pullout Sprayer
- Polished Solid-Surface Countertop & Flush Sink Covers
- Decorative Backsplash
- Roller Bearing Full-Extension Drawer Guides
- Solid Hardwood Drawer Fronts
- Solid-Surface Under-Mount Double-Bowl Sink
- LED Task Lighting
- Appliances
- Flush-Mount Electric 2-Burner Induction Cooktop
- Convection Microwave Oven
- French Door Refrigerator w/Icemaker In Door

Optional

- Dishwasher Drawer w/Cabinet Wood Front

PLUMBING/ELECTRICAL

- Aqua-Hot® Heating System, 45,000 Btu/h (House, Basement, Water)
- Energy Management System (50 Amp)
- Heat Pump on Rear AC Unit
- Heated Water & Holding Tank Compartments
- Holding Tanks San-T-Flush™ System
- Pure Sine Wave Inverter/Charger (2800w)
- Inverter & Battery Monitor
- Multi-Point Water Pump Switching
- PEX Plumbing System
- SensaTank™ Level Monitoring System (Interior)
- Surge Guard™ Electrical System Protection
- Two 15.0M Roof Air Conditioners (39A)
- Three 15.0M Roof Air Conditioners (42G, 42T, 42W)
- Waste Away Sewer Hose Manager
- Whole-Coach Water Filtration System
- Variable-Speed Water Pump
- Residential Hand-Held Shower Head
- Skylight in Shower
- Double Roller Shades (Manual)
- Smoke Detector/Alarm
- Scare Lights
- Heated Tile Floor

BEDROOM

- Exclusive Serenity Series King Mattress w/Signature Memory Foam
- Cedar-Lined Wardrobe
- Hardwood Doors
- Hardwood Framed Headboard w/Padded Fabric Accent
- Lift-Up Bed w/Under-Bed Storage
- Polished Solid-Surface Nightstand Tops
- Remote Generator Start Switch
- Shoe Storage
- Electronics
- Sony® 32" LED HDTV
- Sony DVD Player
- Appliances
- Stacked Washer/Dryer
- Optional
- King Air Mattress w/2 Remotes (39A, 42T, 42W)
- Combination Washer/Dryer
- Washer/Dryer Ready w/Shelves

BATHROOM

- Fiberglass Shower w/Molded Seat/Shelf
- Obscure-Style Decorative Shower Glass Enclosure
- Polished Solid-Surface Countertop w/Residential Faucet
- Solid-Surface Sinks
- Tecma® Silence Plus 2-Button Porcelain Vacuum Flush Toilets (2)
- Residential Hand-Held Shower Head
- Skylight in Shower
- Double Roller Shades (Manual)
- Smoke Detector/Alarm
- Scare Lights

FURNITURE

- Decorative Dinette & Folding Guest Chairs (N/A w/Face-to-Face Dinette Options)
- Dinette w/Deep-Base Cabinet Storage, File Storage & Slide-Out Laptop Tray
- Polished Solid-Surface Dinette Table w/Slide-Out Extension
- Villa Ultraleather Sofa Bed w/Air Mattress (42T, 42W)
- Villa Ultraleather Sofa w/Removable Arms (42T)
- Villa Ultraleather Transformer Sofa Bed w/Air Mattress (39A, 42G)
- Villa Ultraleather Dinette Face-to-Face Dinette Ensemble (42T, 42W)
- Villa Ultraleather Sofa Bed w/Air Mattress (w/Ensemble - 42W)

SAFETY

- 3-Point Integrated Seat Belts at Driver & Passenger Seats
- Carbon Monoxide (CO) Detector
- Daytime Running Lights
- Emergency Egress Window
- Fire Extinguisher
- Lighted Exterior Grab Handle
- Momentary Courtesy Lighting at Entry and Passenger Area
- Side Docking Lamps
- Side Turn Signal Indicators
- Smoke Detector/Alarm
- Scare Lights

STANDARD & OPTIONAL FEATURES | EXTERIOR

GENERAL AMENITIES

- Battery Disconnect Switches for House & Chassis
- Brushed Stainless Kick Plate Under Entry Door
- Convenience Light in Utility Compartment
- Protective Front Mask
- Electrical Outlets in Luggage Compartments
- Fresh Water Hose (25')
- Full-Width Rear Rock Guard w/Stainless Logo Panel
- Integrated Rear Upper Fiberglass Wing Deflector
- (8) Maintenance-Free House Absorbed Glass Mat 6-Volt Batteries (Group GC2)
- Cummins Onan® 8.0 kW Quiet Diesel Generator on Manual Slide-Out w/Automatic Start
- Cummins Onan® 10.0 kW Quiet Diesel Generator on Power Slide-Out
- "One Key" System (Luggage & Entry Doors)
- Power Cord Reel (50 Amp)
- Power Double Entry Step
- Rear Engine Access Door w/Power Assist Struts
- Sidewall-Mounted Engine Air Intake
- Spray Wand w/Soap Dispenser & Paper Towel Holder
- Strut-Assisted Side-Hinged Luggage Doors
- Windshield Washer 1.5-Gallon Reservoir
- Rear Engine Access Door w/Power Assist Struts
- Sidewall-Mounted Engine Air Intake
- Spray Wand w/Soap Dispenser & Paper Towel Holder
- Strut-Assisted Side-Hinged Luggage Doors
- Windshield Washer 1.5-Gallon Reservoir

Optional

- 1st Full Bay 36" & 54" Slide Tray
- 1st Full Bay 90" Slide Tray
- 2nd Full Bay 36" & 54" Slide Tray
- 2nd Full Bay 90" Slide Tray
- Custom Exterior Paint Color Request
- Exterior Sidewall TV (Sony® 32" LED HDTV & Sony AM/FM/CD/DVD)
- Power Luggage Door Locks (Select Doors) w/Remote Key Fob
- Two-Piece Aluminum Rear Ladder

AWNINGS/WINDOWS/DOORS

- 30" Entry Door w/Deadbolt
- Entry Screen Door w/Logo Kick Plate
- Frameless Flush-Mount Windows
- Powered Entry Door Awning
- Slide-Out Mounted Girard Power Patio Awning w/Wind Sensor System
- Slide-Out Topper Awnings
- Window Awnings (Bedroom & Front Roadside)

CONSTRUCTION

- 5-Layer Flooring w/3" Bead Foam Insulation
- 6-Layer Radius Roof w/Bead Foam Insulation
- Aluminum Interlocking Floor/Wall/Ceiling Framing
- Central Electrical Panel for 120V/12V AC/DC
- Dense Bead Foam Insulation Throughout
- Axalta™ Automotive Full Body Paint w/Sand & Buff High-Gloss Finish
- Fiberglass Front and Rear Quarter Panels
- Fiberglass Molded Front Bumper
- Full Fiberglass Front & Rear Caps
- Gel Coat Fiberglass Exterior Sidewalls w/No Wood Substrate
- Heated Water and Holding Tank Compartments
- Insulated Aluminum Framed & Paneled Luggage Compartment Doors
- One-Piece Molded Fiberglass Roof w/Radius Edges
- Pebble-Finished Fiberglass Basement Lining
- Steel Construction on Front Bulkhead
- Sound Absorption Material Front, Rear & Engine
- Vacu-bond® Sidewall, Roof, Floor & Rear Wall

LIBERTY® CHASSIS

- Aluminum Wheels (6)
- Anti-Lock Brake System (ABS)
- Automatic 4-Point Hydraulic Leveling System
- Chassis Filter Service Center
- Custom-Tuned Sachs® Shocks
- Dual Fuel Fill Doors, Locking
- Electro-Coated Heavy-Duty Steel Bridge Structure
- Engine Block Heater
- Full Air Brakes w/Automatic Slack Adjusters
- Neway® Air Ride Suspension
- Side Radiator Configuration
- Two 1900 CCA Maintenance-Free Chassis Batteries
- ZF® Independent Front Suspension w/60-Degree Steering Angle





WEIGHTS & MEASURES

WEIGHTS

| CHASSIS – LIBERTY® | | | | |
|---|--------|--------|--------|--------|
| Model | 39A | 42G | 42T | 42W |
| GVWR (lbs) ¹ | 38,600 | 44,600 | 44,600 | 44,600 |
| Front GAWR (lbs) ² | 14,600 | 14,600 | 14,600 | 14,600 |
| Rear GAWR (lbs) ² | 24,000 | 20,000 | 20,000 | 20,000 |
| Tag Axle GAWR (lbs) ² | N/A | 10,000 | 10,000 | 10,000 |
| GCWR (lbs) ³ | 48,600 | 59,600 | 59,600 | 59,600 |
| Hitch Rating Weight (lbs) ^{††} | 10,000 | 15,000 | 15,000 | 15,000 |
| Tongue Weight (lbs) [†] | 1,000 | 1,500 | 1,500 | 1,500 |
| Fuel Capacity (gal) | 100 | 150 | 150 | 150 |

CHASSIS – Liberty 450

MODEL: Freightliner® XCM Series

ENGINE: Cummins® ISL9 w/2-Stage Engine Brake

TORQUE: 1,250 lb-ft @ 1,400 RPM

HORSEPOWER: 450 HP

TRANSMISSION: Allison® 3000 MH, 6-Speed w/Electronic Shifter

ALTERNATOR: 170-Amp Leece-Neville

FRONT TIRES: 295/80R 22.5 Michelin® Radial (2)

REAR TIRES: 295/80R 22.5 Michelin Radial (6)

DIMENSIONS & CAPACITIES

| MODEL | 39A | 42G | 42T | 42W |
|---|-----------|-----------|-----------|-----------|
| Wheelbase (inches) | 266" | 302" | 302" | 302" |
| Overall Length ⁴ | 39'-11.5" | 42'-11.5" | 42'-11.5" | 42'-11.5" |
| Overall Height (with A/C) | 12'-11" | 12'-11" | 12'-11" | 12'-11" |
| Overall Width (maximum) ^{5, 6} | 102" | 102" | 102" | 102" |
| Interior Height (maximum) | 84" | 84" | 84" | 84" |
| Interior Width (maximum) | 96" | 96" | 96" | 96" |
| Fresh Water Holding Tank (gal) | 100 | 100 | 100 | 100 |
| Grey Water Holding Tank (gal) | 60 | 60 | 60 | 60 |
| Black Water Holding Tank (gal) | 40 | 40 | 40 | 40 |

IMPORTANT – PLEASE READ: Product information, photography and illustrations included in this publication were as accurate as possible at the time of printing. For further product information and changes, please visit our website at www.AmericanCoach.com or contact your local American Coach dealer. Prices, materials, design and specifications are subject to change without notice. All weights, fuel, liquid capacities and dimensions are approximate. American Coach has designed its recreational vehicles to provide a variety of uses for its customers. Each vehicle features optimal seating, sleeping, storage and fluid capacities. The user is responsible for selecting the proper combination of loads (i.e., occupants, equipment, fluids, cargo, etc.) to ensure that the vehicle's capacities are not exceeded.

- GVWR (Gross Vehicle Weight Rating) is the maximum permissible weight of this fully loaded motor home. The GVWR is equal to or greater than the sum of the (UVW) unloaded vehicle weight plus the (OCCC) occupant cargo-carrying capacity*
- GAWR (Gross Axle Weight Rating) is the maximum permissible loaded weight a specific axle is designed to carry.
- GCWR (Gross Combined Weight Rating) is the value specified by the motor home manufacturer as the maximum allowable loaded weight of this motor home with its towed vehicle. Towing and braking capacities may be different. Refer to American Coach and chassis manufacturer's manuals for complete information.
- Length measured from front bumper to rear bumper (excludes accessories).
- Excludes safety equipment and awnings.
- Motor homes feature a body width over 96" which will restrict your access to certain roads. Before purchasing, you should research any state and/or province road laws which may affect your usage.

N/A = Not Applicable

† The chassis manufacturer recommends the installation of a supplemental brake control system to activate the brakes on the vehicle or trailer you are towing. Hitch receiver ratings expressed are maximum for the hitch receiver installed and may require the purchase of additional equipment that is dependant on the weight of the towed load. Consult with hitch receiver manufacturer for further information.

†† The Minimum Towable Load of this vehicle is the available weight capacity, up to GCWR, when the coach is fully loaded to maximum GVWR. However, if the coach is loaded to something less than maximum GVWR, that extra available weight capacity can be added to your Towable Load. For example, if your coach is loaded to 1,000 lbs less than maximum GVWR, your Towable Load increases accordingly. Do not exceed the hitch rating weight, GVWR or GCWR.

* UVW and OCCC are found on the label containing the federal certification tag in each RV.

** All 2015 American Coach motor homes include a 1-year American Coach Premier Roadside Assistance membership. For complete info, see your American Coach dealer.

CONTACT: To locate a dealer near you, visit our website at www.AmericanCoach.com or call 1-800-322-8216. We can also be contacted at American Coach Customer Care, P.O. Box 31, Decatur, IN 46733.

THE AMERICAN COACH DIFFERENCE



American Coach has partnered with Freightliner Custom Chassis Corporation (FCCC) to provide an integrated engineering chassis solution for the exclusive Liberty® Chassis design—durable and dependable with an impressive warranty and the smoothest ride in the industry.

SUPERIOR INNOVATION

The American Coach manufacturing process incorporates expert engineering, cutting-edge technology and industry-leading construction techniques.

- Vacu-bonded® floors, sidewalls and roof
- Interlocking aluminum construction
- DuPont® ChromaSystem™ full-body exterior paint

TRUSTED SUPPORT

From the first time you step inside your coach—and for many years to come—our service and support team is here to guarantee a smoother, safer, more satisfying ownership experience.

- American Coach Premium Roadside Assistance
- Nationwide network of luxury motorcoach dealers
- Dedicated factory support exclusively for American Coach owners



RELIABLE REPUTATION

In a marketplace full of imitators, the American Coach reputation speaks for itself.

- Industry-leading engineering and construction
- Industry-leading service and support
- Recognition and respect from customers
- Highest resale values
- Most satisfied repeat buyers

THE AMERICAN COACH DIFFERENCE

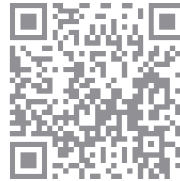
A large, stylized logo for 'American Revolution' is positioned in the background of the right page. The word 'American' is in a cursive script, and 'REVOLUTION' is in a bold, blocky font with a lightning bolt graphic under the 'O'. The entire logo is rendered in a light teal color against a darker teal background.

EXCEPTIONAL DISTINCTION

At American Coach, we believe that your motorcoach is an exuberant declaration of success. That's why we strive every day to provide the best service, the most personal support, the highest-quality materials and the most distinctive designs in the RV industry.

We outfit each coach with state-of-the-art, name-brand technology, sophisticated accessories and engineered components. Our luxury motorcoaches do more than help you make memories—they help you make a statement, no matter where your travels take you.

Visit *AmericanCoach.com* and look for American Coach iPad® apps available through iTunes.



ALLIED RECREATION GROUP

2015
AMERICAN REVOLUTION

2015
AMERICAN TRADITION

2015
AMERICAN EAGLE

2015
AMERICAN HERITAGE

American Coach Customer Care, P.O. Box 31, Decatur, IN 46733.

© 2014. Allied Recreation Group, Inc. Printed in the USA. Inventory Control Number AR15B1, 07/14. Model Year 2015, First Edition.